



1 AND 1A TILLER

1 AND 1A TILLER

REF. NO.	PART NUMBER	DESCRIPTION	CPE-2
----------	-------------	-------------	-------

REF. NO.	PART NUMBER	DESCRIPTION	CPE-2
----------	-------------	-------------	-------

1 ROTARY TILLER
 BUILT 1966 TO 1971
 1A ROTARY TILLER
 BUILT 1971 TO 1974

1 ROTARY TILLER -CONTINUED
 BUILT 1966 TO 1971
 1A ROTARY TILLER
 BUILT 1971 TO 1974

INDEX TO UNITS	DESCRIPTION	PAGE	GRID
DRIVE		5	119
CHAIN		11	J01
TILLER FRONT		12	J02
GEAR BOX		9	123
HITCH		3	117
MOUNTING, TILLER		7	121
PRODUCT GRAPHICS		12	J02
PULLEYS		7	121
SHIELDS		3	117
SPRING, HELPER		10	124
TINES		8	122



1 AND 1A TILLER

-2-

SECTION J



1 AND 1A TILLER

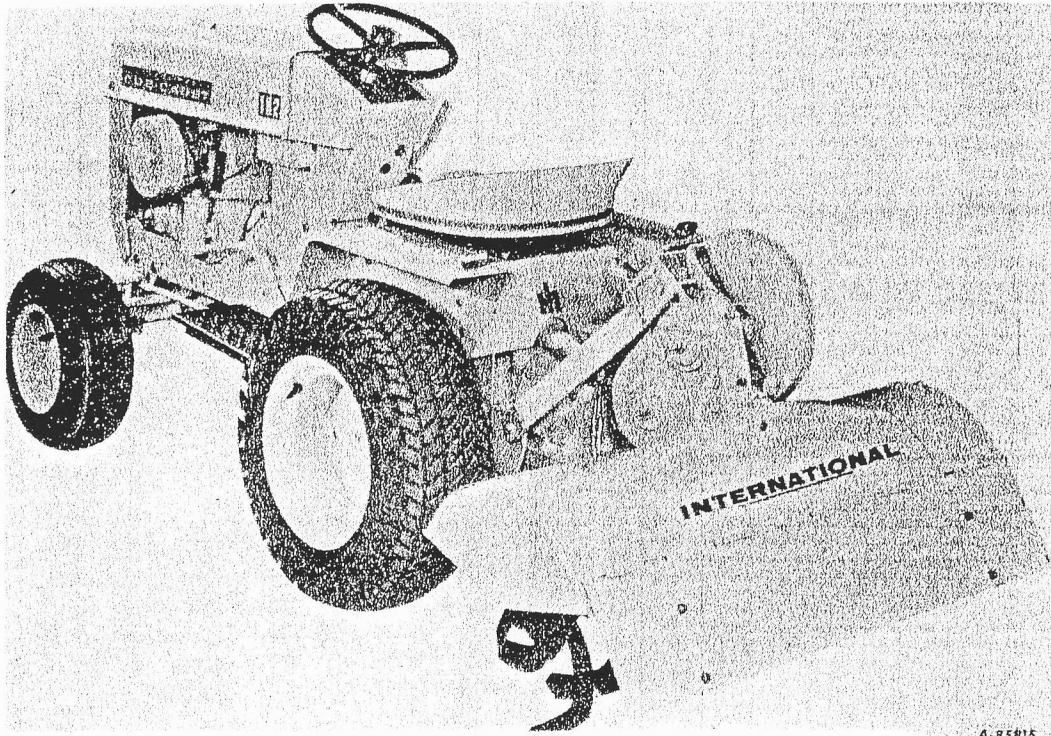
-2-

SECTION J

REF. NO.	PART NUMBER	DESCRIPTION	CPE-2	REF. NO.	PART NUMBER	DESCRIPTION	CPE-2
----------	-------------	-------------	-------	----------	-------------	-------------	-------

MACHINE VIEW

MACHINE VIEW -CONTINUED



INTERNATIONAL NO. 1 ROTARY TILLER
 Mounted on Cub Cadet 102

A-85815

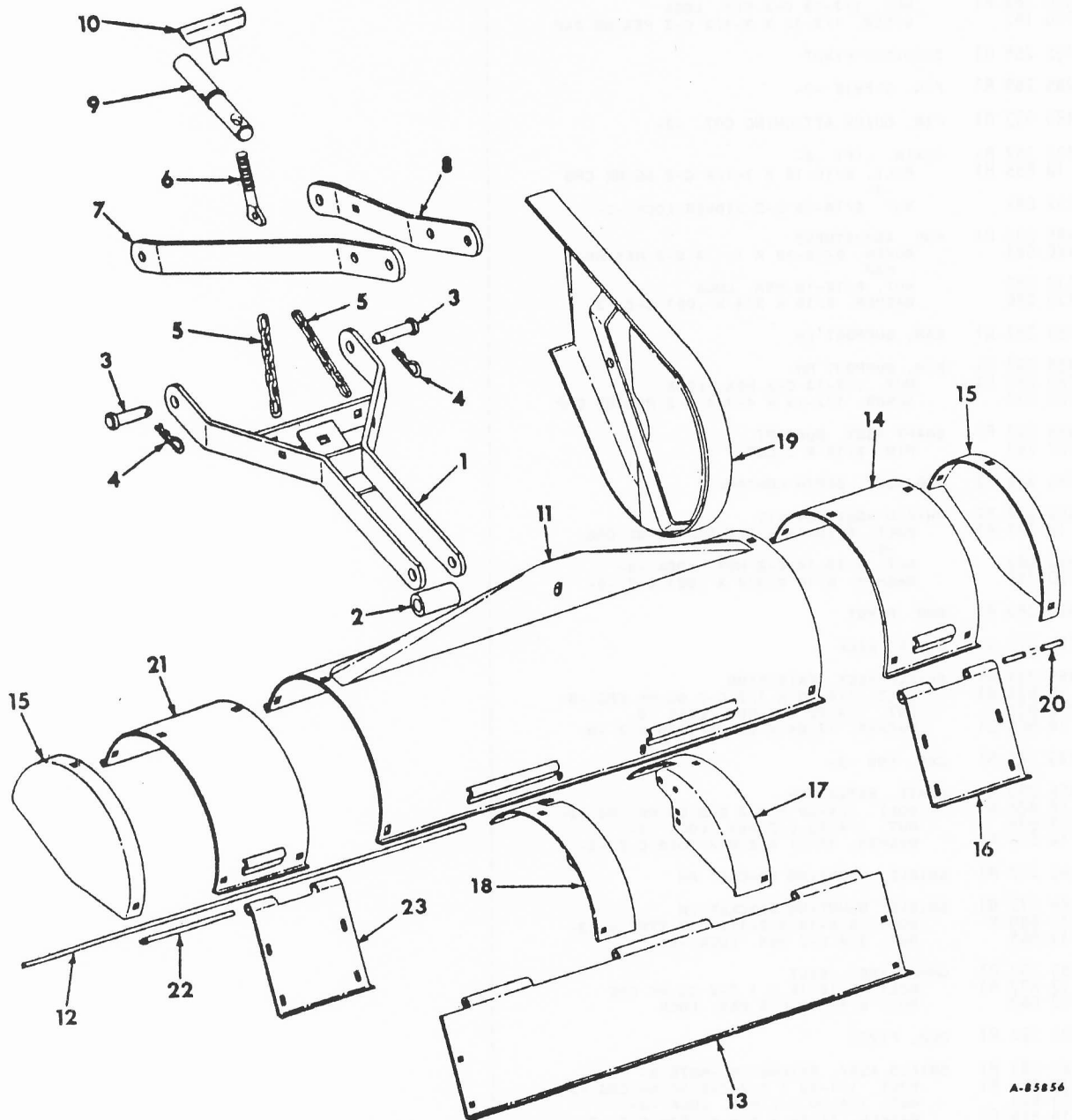


REF. NO.	PART NUMBER	DESCRIPTION	CPE-2
----------	-------------	-------------	-------

REF. NO.	PART NUMBER	DESCRIPTION	CPE-2
----------	-------------	-------------	-------

HITCH AND SHIELDS
-1 AND 1A TILLER-

HITCH AND SHIELDS -CONTINUED
-1 AND 1A TILLER-



A-85856



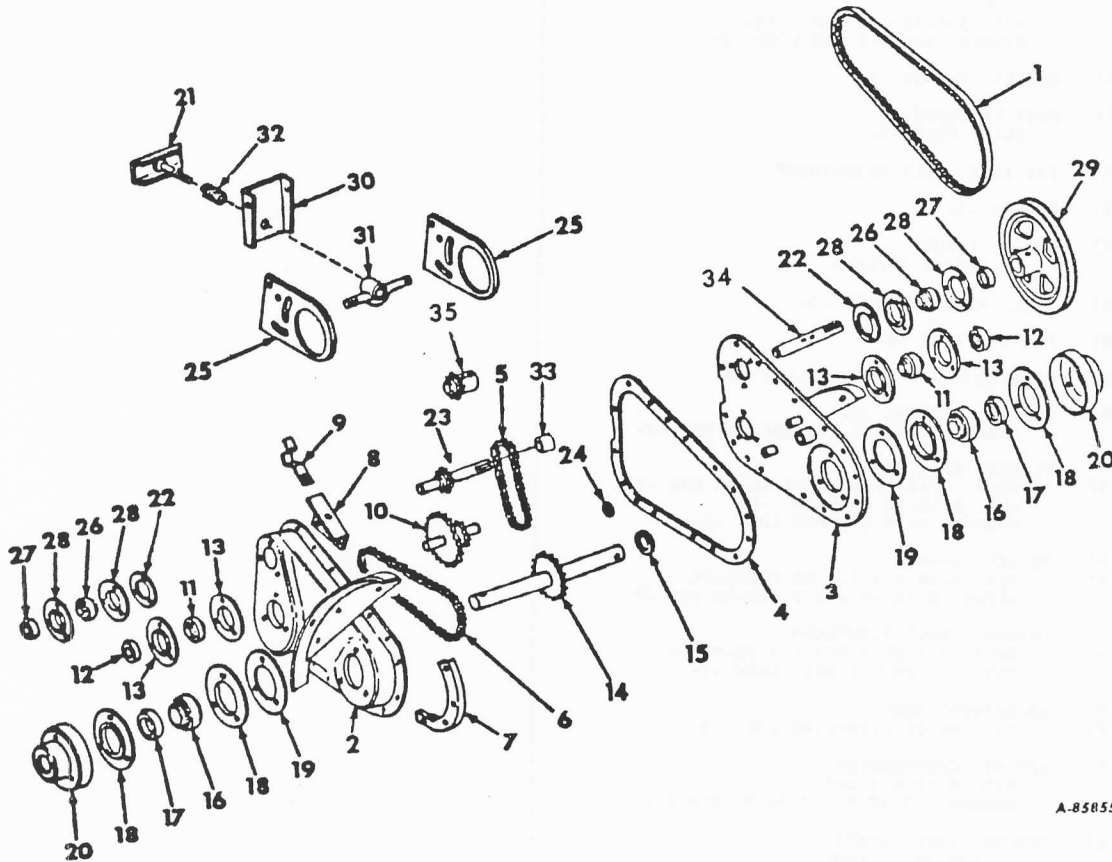
REF. NO.	PART NUMBER	DESCRIPTION	CPE-2	REF. NO.	PART NUMBER	DESCRIPTION	CPE-2
		HITCH AND SHIELDS -CONTINUED					
		-1 AND 1A TILLER-					
1	485 286 R2	BRACKET ASSY. LOWER SUPPORT					
	460 869 R1	NUT, 1/2-13 C-Z HEX. LOCK					
	180 192	SCREW, 1/2-13 X 3-1/2 C-Z HEX-HD CAP					
2	485 288 R1	BUSHING, PIVOT					
3	485 289 R1	PIN, CLEVIS -2-					
4	480 523 R1	PIN, QUICK ATTACHING COT. -2-					
5	485 352 R1	CHAIN, LIFT -2-					
	16 888 R1	BOLT, 5/16-18 X 1-1/4 C-Z SQ-NK CRG					
		-2-					
9	412 083	NUT, 5/16-18 C-Z STOVER LOCK -2-					
6	485 290 R1	ROD, ADJUSTMENT					
	180 081	SCREW, 5/16-18 X 1-1/4 C-Z HEX-HD CAP					
9	412 083	NUT, 5/16-18 HEX. LOCK					
	120 386	WASHER, 5/16 X 3/4 X .051 C-Z -2-					
7	485 291 R1	BAR, SUPPORT LH					
8	485 292 R1	BAR, SUPPORT RH					
	460 869 R1	NUT, 1/2-13 C-Z HEX. LOCK					
	189 314	SCREW, 1/2-13 X 4-3/4 C-Z HEX-HD CAP					
9	485 294 R1	SHAFT ASSY, SUPPORT					
	137 263	PIN, 3/16 X 2 COT.					
10	485 295 R2	TEE ASSY, DEPTH CONTROL					
11	485 278 R1	SHIELD ASSY, SAFETY					
	16 897 R1	BOLT, 5/16-18 X 3/4 C-Z SQ-NK CRG					
		-6-					
9	412 083	NUT, 5/16-18 C-Z HEX. LOCK -6-					
	120 386	WASHER, 5/16 X 3/4 X .051 C-Z -6-					
12	485 280 R1	ROD, PIVOT					
13	485 279 R1	PLATE, BACK					
14	485 281 R1	SHIELD ASSY, EXTENSION					
	18 626 R1	BOLT, 1/4-20 X 1/2 C-Z SQ-NK CRG -9-					
	273 924	NUT, 1/4-20 C-Z HEX. LOCK -9-					
	16 559 R1	WASHER, 17/64 X 5/8 X .036 C-Z -9-					
15	485 282 R1	CAP, END -2-					
16	485 283 R1	PLATE, EXTENSION					
	18 626 R1	BOLT, 1/4-20 X 1/2 C-Z SQ-NK CRG -2-					
	273 924	NUT, 1/4-20 C-Z HEX. LOCK -2-					
	16 559 R1	WASHER, 17/64 X 5/8 X .036 C-Z -2-					
17	485 276 R1	SHIELD, MOUNTING BRACKET RH					
18	485 277 R1	SHIELD, MOUNTING BRACKET LH					
	142 680 H	BOLT, 3/8-16 X 2-1/2 C-Z TYPE 4 -3-					
9	411 655	NUT, 3/8 C-Z HEX. LOCK -3-					
19	485 293 R1	GUARD ASSY, BELT					
	12 872 R1	BOLT, 5/16-18 X 1 C-Z SQ-NK CRG					
9	412 083	NUT, 5/16-18 C-Z HEX. LOCK					
20	485 284 R1	ROD, PIVOT					
21	485 281 R1	SHIELD ASSY, EXTENSION -NOTE A-					
	18 626 R1	BOLT, 1/4-20 X 1/2 C-Z SQ-NK CRG -3-					
	273 924	NUT, 1/4-20 C-Z HEX. LOCK -3-					
	16 559 R1	WASHER, 17/64 X 5/8 X .036 C-Z -3-					
22	485 284 R1	ROD, PIVOT -NOTE A-					
23	485 283 R1	PLATE, EXTENSION -NOTE A-					
	18 626 R1	BOLT, 1/4-20 X 1/2 C-Z SQ-NK CRG -2-					
	273 924	NUT, 1/4-20 C-Z HEX. LOCK -2-					
	16 559 R1	WASHER, 17/64 X 5/8 X .036 C-Z -2-					

NOTE A -FOR TILLERS WITH CUTTING
WIDTH INCREASED FROM 32 TO
38 IN.-



REF. NO.	PART NUMBER	DESCRIPTION	CPE-2
----------	-------------	-------------	-------

REF. NO.	PART NUMBER	DESCRIPTION	CPE-2
----------	-------------	-------------	-------

CHAIN DRIVE AND RELATED PARTS
-1 AND 1A TILLER-CHAIN DRIVE AND RELATED PARTS -CONTINUED
-1 AND 1A TILLER-

A-85855 C

1	487 044 R1	BELT, DRIVE
2	485 248 R1	HOUSING ASSY, CHAIN DRIVE
3	485 249 R1	PLATE, HOUSING BACK
	181 566	BOLT, 1/4-28 X 3/4 C-Z HEX-HD CAP -16-
	485 350 R1	NUT, 1/4-28 C-Z HEX. FLANGE LOCK -16-
4	485 264 R1	GASKET, CHAIN DRIVE HOUSING
5	485 691 R1	CHAIN, MAIN DRIVE
6	485 692 R1	CHAIN, TINE DRIVE
7	485 265 R1	SHOE, FORMED
8	485 266 R1	CLIP, MOUNTING BRACKET
9	485 285 R1	CLIP, RETAINER
	412 083	NUT, 5/16-18 C-Z HEX. LOCK
	180 077	SCREW, 5/16-18 X 3/4 C-Z HEX-HD CAP
	120 386	WASHER, 5/16 X 3/4 X .051 C-Z
10	485 255 R2	SPROCKET ASSY, IDLER -10 & 28 T-

11	666 589 R91	BEARING ASSY, W/O LOCKING COLLAR -2-
12	455 102 R21	COLLAR, LOCKING W/SET SCREW -2-
	102 572	SCREW, 1/4-20 X 5/8 SOC-HD SET -2-
13	462 360 R1	FLANGE, BEARING -4-
	16 897 R1	BOLT, 5/16-18 X 3/4 C-Z SQ-NK CRG -6-
	120 376	NUT, 5/16-18 C-Z HEX. -6-
	120 214	WASHER, 5/16 C-Z MED LOCK -6-
14	485 256 R2	SHAFT ASSY, MAIN DRIVE -18 T-
15	485 257 R1	SPACER
16	485 259 R91	BEARING W/O LOCKING COLLAR -2-
17	455 104 R11	COLLAR, LOCKING W/SET SCREW -2-
	102 572	SCREW, 1/4-20 X 5/8 SOC-HD SET -2-



1 AND 1A TILLER

-6-

SECTION J



1 AND 1A TILLER

-6-

SECTION J

REF. PART	DESCRIPTION	CPE-2
NO.	NUMBER	

REF. PART	DESCRIPTION	CPE-2
NO.	NUMBER	

CHAIN DRIVE AND RELATED PARTS -CONTINUED
-1 AND 1A TILLER-

18	485 261 R1	FLANGE, BEARING -4-	
	634 979 R1	BOLT, 3/8-16 X 1-1/2 C-Z SQ-NK CRG -6-	
	120 377	NUT, 3/8-16 C-Z HEX. -12-	
	120 382	WASHER, 3/8 C-Z MED LOCK -6-	
19	485 262 R1	GASKET, FLANGE -2-	
20	485 263 R1	DUST EXCLUDER -2-	
	63 720 C1	SEAL, FELT -2-	
21	485 271 R1	TEE ASSY, BELT ADJUSTMENT	
22	485 253 R1	SPACER -2-	
23	492 952 R2	SHAFT, INPUT -FOR 1A TILLER-	
24	485 250 R1	SEAL, ADHESIVE DUST -2-	
25	485 254 R1	PLATE, PIVOT -2-	
26	471 895 R91	BEARING W/O LOCKING COLLAR -2-	
27	455 958 R11	COLLAR, LOCKING -2-	
	102 572	SCREW, 1/4-20 X 5/8 SOC-HD SET -2-	
28	455 961 R1	FLANGE, BEARING -4-	
	12 872 R1	BOLT, 5/16-18 X 1 C-Z SQ-NK CRG -6-	
	120 376	NUT, 5/16-18 C-Z HEX. -6-	
	120 214	WASHER, 5/16 C-Z MED LOCK -6-	
29	485 267 R1	PULLEY, DRIVE	
	21 324 R1	KEY, 3/16 X 1-5/8 SQ PARALLEL	
	102 581	SCREW, 5/16-18 X 3/8 SOC-HD CUP PT	
30	485 268 R1	CHANNEL, BELT TIGHTENER	
	18 627 R1	BOLT, 1/4-20 X 3/4 C-Z SQ-NK -2-	
	273 924	NUT, 1/4-20 C-Z HEX. LOCK -2-	
31	485 269 R1	ADJUSTMENT ASSY	
	480 523 R1	PIN, QUICK ATTACHING COT. -2-	
32	485 270 R1	SPRING, COMPRESSION	
	120 169	PIN, 5/32 X 1 COT.	
	120 396	WASHER, 17/32 X 1-1/16 X .074 C-Z	
33	61 914 C1	SPACER, INPUT SHAFT -FOR 1A TILLER-	
34	485 251 R1	SHAFT, INPUT -FOR 1 TILLER-	
35	485 252 R1	SPROCKET -12 T- -FOR 1 TILLER-	
	591 184 R1	PIN, 3/16 X 1-1/4 SPIROL -2-	

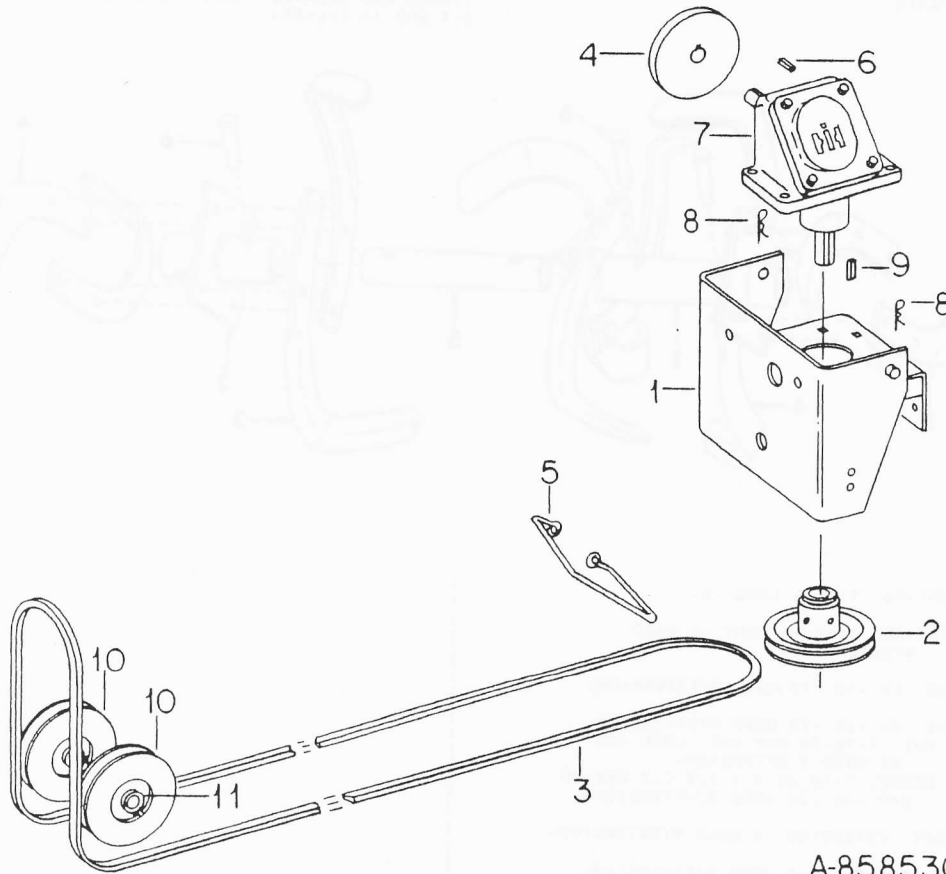


REF. NO.	PART NUMBER	DESCRIPTION	CPE-2
----------	-------------	-------------	-------

TILLER MOUNTING, GEAR BOX & PULLEYS
-1 AND 1A TILLER-

REF. NO.	PART NUMBER	DESCRIPTION	CPE-2
----------	-------------	-------------	-------

TILLER MOUNTING, GEAR BOX & PULLEYS -CONTINUED
-1 AND 1A TILLER-



A-85853C

1	485 245 R1	MOUNTING ASSY, GEAR BOX
	12 872 R1	BOLT, 3/16-18 X 1 C-Z SQ-NK CRG -3-
	120 376	NUT, 5/16-18 C-Z HEX. -3-
	180 122	SCREW, 3/8-16 X 1 C-Z HEX-HD CAP -2-
	180 124	SCREW, 3/8-16 X 1-1/4 C-Z HEX-HD CAP -2-
	120 382	WASHER, 3/8 C-Z MED LOCK -4-
	120 214	WASHER, 3/16 C-Z MED LOCK -3-
2	485 246 R91	PULLEY W/SET SCREWS
	102 581	SCREW, 5/16-18 X 3/8 SOC-HD SET -2-
3	487 045 R2	BELT, PTO DRIVE
		-TRACTOR SERIAL NO. 400,000 AND BELOW-
3	549 250 R1	BELT, PTO DRIVE
		-TRACTOR SERIAL NO. 400,001 AND ABOVE-
4	485 247 R91	PULLEY W/SET SCREWS
	137 218	PIN, 5/32 X 1-1/4 COT.
	102 581	SCREW, 5/16-18 X 3/8 SOC-HD SET -2-
5	56 571 C1	GUIDE, BELT -HYDRO TRANSMISSION-
5	485 300 R1	GUIDE, BELT -GEAR TRANSMISSION-
	180 122	SCREW, 3/8-16 X 1 C-Z HEX-HD CAP -2-
	446 548	WASHER, 3/8 X 3/4 X .051 C-Z -2-
6	474 098 R1	KEY, 3/16 X 1-1/4 SQ PARALLEL

7		BOX ASSY, GEAR -90 DEGREE-
		-FOR COMPONENTS SEE LIST OF PARTS UNDER DETAILS OF 90 DEGREE GEAR BOX-
8	480 523 R1	PIN, QUICK ATTACHABLE COT. -2-
9	21 325 R1	KEY, 3/16 X 2 SQ PARALLEL
10	493 164 R91	PULLEY, DRIVE BELT IDLER -2-
11	542 122 R91	BEARING ASSY, IDLER PULLEY -2-

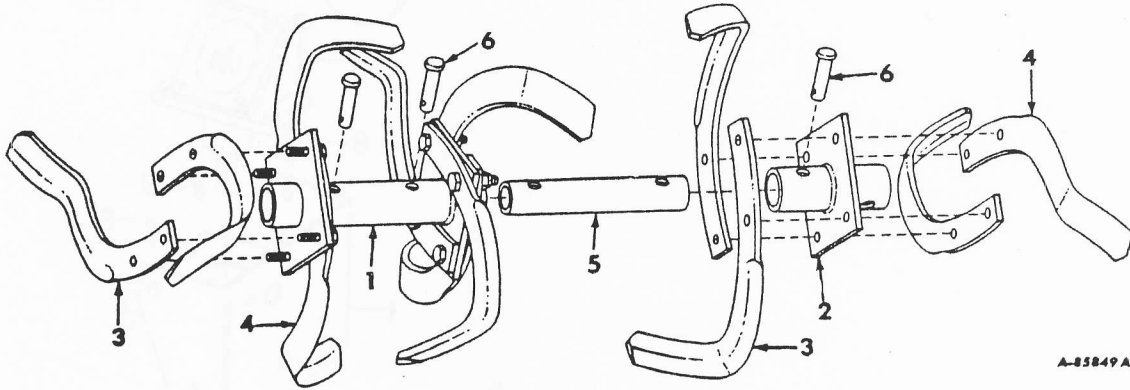


REF. NO.	PART NUMBER	DESCRIPTION	CPE-2
----------	-------------	-------------	-------

REF. NO.	PART NUMBER	DESCRIPTION	CPE-2
----------	-------------	-------------	-------

TINES AND RELATED PARTS
-1 AND 1A TILLER-

TINES AND RELATED PARTS -CONTINUED
-1 AND 1A TILLER-

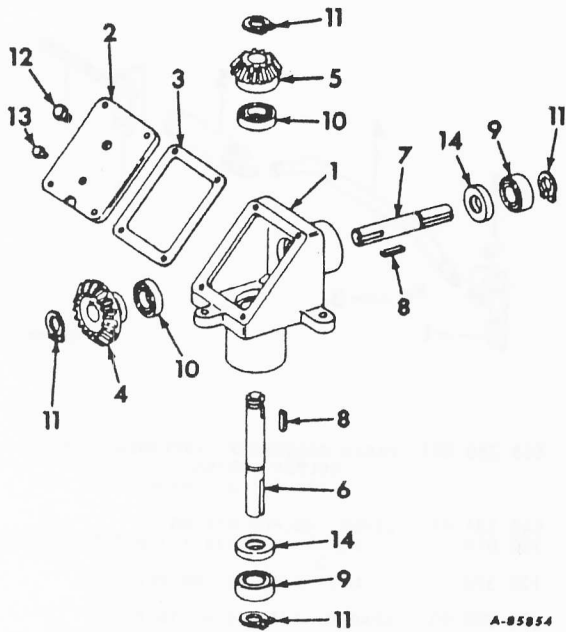


- | | | |
|---|------------|---|
| 1 | 485 272 R1 | MOUNTING, TINE - LONG -2- |
| 2 | 485 273 R1 | MOUNTING, TINE - SHORT -2 USED W/EXTENSION- |
| 3 | 485 348 R1 | TINE, LH -10 -12 USED W/EXTENSION- |
| 4 | 485 349 R1 | TINE, RH -10 -12 USED W/EXTENSION- |
| | 274 636 | NUT, 7/16-20 CDP HEX. LOCK -20- |
| | 181 670 | SCREW, 7/16-20 X 1-1/2 C-Z HEX-HD CAP -20 -24 USED W/EXTENSION- |
| 5 | 485 274 R1 | SHAFT, EXTENSION -2 USED W/EXTENSION- |
| 6 | 362 840 R1 | PIN, SHEAR -4 -6 USED W/EXTENSION- |
| | 120 169 | PIN, 5/32 X 1 C-Z COT. -4- |
| | | -6 USED W/EXTENSION- |
| | 485 287 R1 | TOOTH, CENTER |
| | 17 351 R1 | BOLT, 3/8-16 X 1 C-Z SQ-NK CRG |
| | 274 993 | NUT, 3/8-16 CDP HEX. LOCK |



REF. NO.	PART NUMBER	DESCRIPTION	CPE-2
----------	-------------	-------------	-------

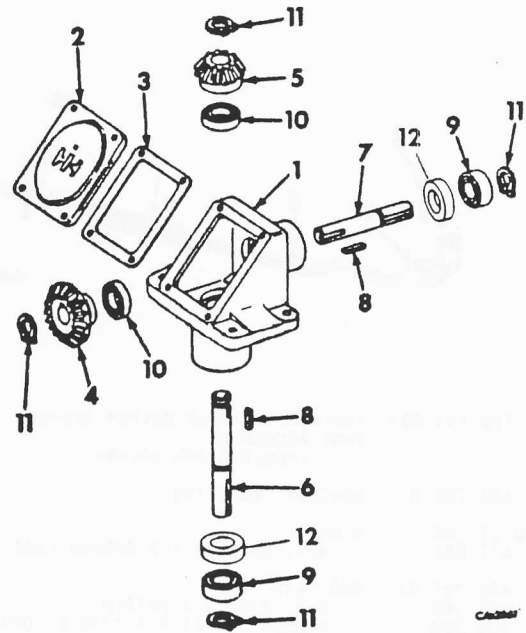
GEAR BOX -90 DEGREE-
-1 TILLER-



1	485 301 R1	BOX, GEAR	
2	485 302 R1	COVER, GEAR BOX	
	180 020	SCREW, 1/4-20 X 3/4 C-Z HEX-HD CAP	
	120 380	WASHER, 1/4 C-Z LOCK -4-	
3	475 598 R1	GASKET, GEAR BOX COVER	
4	485 304 R1	GEAR, BEVEL - 30 TOOTH	
5	485 305 R1	GEAR, BEVEL - 20 TOOTH	
6	485 303 R1	SHAFT, INPUT	
7	475 601 R1	SHAFT, OUTPUT	
8	475 642 R1	KEY, 3/16 X 11/16 SQ PARALLEL -2-	
9	475 627 R91	BEARING, BALL -2-	
10	475 628 R91	BEARING, BALL -2-	
11	269 181 R1	RING, RETAINING -4-	
12	444 612	PLUG, AUTOMOTIVE 1/8 NPT SQ-HD	
13	444 618	PLUG, AUTOMOTIVE 1/4 NPT SQ-HD	
14	485 306 R1	SEAL, OIL -2-	

REF. NO.	PART NUMBER	DESCRIPTION	CPE-2
----------	-------------	-------------	-------

GEAR BOX -90 DEGREE-
-1A TILLER

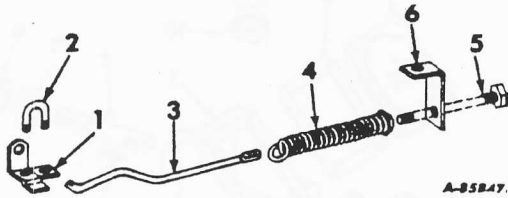


1	543 152 R1	BOX, GEAR	
	444 612	PLUG, AUTOMOTIVE 1/8 NPT SQ-HD	
	444 618	PLUG, AUTOMOTIVE 1/4 NPT SQ-HD	
2	493 542 R1	COVER, GEAR BOX	
	178 434	SCREW, 1/4-14 X 1/2 C-Z HEX-HD TAP.	
	120 380	WASHER, 1/4 C-Z LOCK -4-	
3	493 543 R1	GASKET, GEAR BOX COVER	
4	485 304 R1	GEAR, BEVEL - 30 TOOTH	
5	485 305 R1	GEAR, BEVEL - 20 TOOTH	
6	485 303 R1	SHAFT, INPUT	
7	475 601 R1	SHAFT, OUTPUT	
8	475 642 R1	KEY, 3/16 X 11/16 SQ PARALLEL -2-	
9	475 627 R91	BEARING, BALL -2-	
10	475 628 R91	BEARING, BALL -2-	
11	269 181 R1	RING, RETAINING -4-	
12	485 306 R1	SEAL, OIL -2-	



REF. NO.	PART NUMBER	DESCRIPTION	CPE-2
----------	-------------	-------------	-------

IMPLEMENT HANDLE HELPER SPRING
-1 AND 1A TILLER-



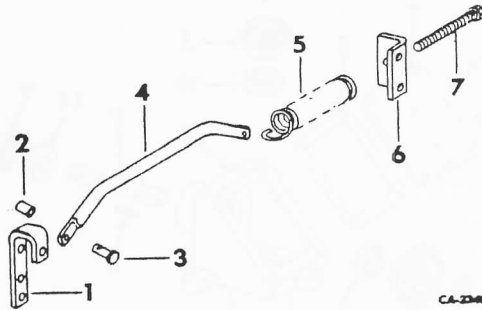
A-85847

399 481 R91 IMPLEMENT HANDLE HELPER SPRING
PART ACCESSORY
-400,000 AND BELOW-

- | | | |
|---|------------|-----------------------------------|
| 1 | 485 296 R1 | BRACKET, MOUNTING |
| 2 | PO 22 288 | U-BOLT |
| 9 | 412 083 | NUT, 5/16-18 C-Z STOVER LOCK -2- |
| 3 | 485 297 R1 | ROD, LIFT |
| | 120 169 | PIN, 5/32 X 1 COTTER |
| | 120 396 | WASHER, 17/32 X 1-1/16 X .074 C-Z |
| 4 | 485 298 R1 | SPRING ASSY, TENSION |
| 5 | 485 351 R1 | BOLT, ADJUSTMENT |
| 6 | 485 299 R1 | BRACKET, MOUNTING |
| | 180 122 | SCREW, 3/8-16 X 1 C-Z HEX-HD CAP |

REF. NO.	PART NUMBER	DESCRIPTION	CPE-2
----------	-------------	-------------	-------

IMPLEMENT HANDLE HELPER SPRING
-1A TILLER



CA-2448

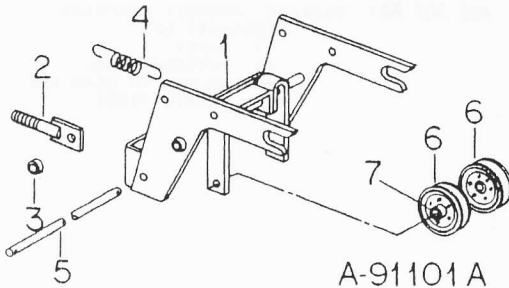
548 380 R91 PARTS ACCESSORY, IMPLEMENT HANDLE
HELPER SPRING
-400,001 AND ABOVE-

- | | | |
|---|------------|-------------------------------------|
| 1 | 548 381 R1 | LEVER, HELPER SPRING |
| | 180 078 | SCREW, 5/16-18 X 7/8 ZND HEX-HD CAP |
| | 120 376 | NUT, 5/16-18 ZND HEX. -2- |
| 2 | 878 986 R1 | SPACER, 1/4 X 5/8 STD PIPE |
| 3 | 21 941 R1 | PIN, 5/16 X 1-7/8 ZND STD-HD |
| | 178 373 R1 | WASHER, 17/32 X 1 X 16 GA C-Z |
| | 12 235 R1 | PIN, 1/8 X 5/8 C-Z COT. |
| 4 | 548 382 R1 | ROD, HELPER SPRING |
| 5 | 485 298 R1 | SPRING, TENSION |
| 6 | 548 383 R1 | BRACKET, HELPER SPRING |
| | 180 120 | SCREW, 3/8-16 X 3/4 ZND HEX-HD CAP |
| | 120 377 | NUT, 3/8-16 ZND HEX. -2- |
| 7 | 485 351 R1 | BOLT, ADJUSTMENT |



REF. NO.	PART NUMBER	DESCRIPTION	CPE - 2
----------	-------------	-------------	---------

TILLER FRONT DRIVE
 -TRACTORS WITHOUT 3 SPINDLE MOWER-
 -1 TILLER-



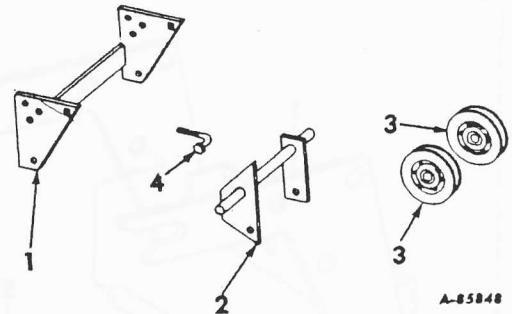
A-91101A

- | | | |
|---|-------------|---|
| | 490 555 R91 | PACKAGE, TILLER FRONT DRIVE SERVICE
-REQUIRED TO MOUNT ROTOR TILLER
ON 70, 71, 72, 100, 102, 104, 105
122, 123, 124 & 125 CUB CADET
TRACTORS- -1968 AND SINCE-
-400,000 AND BELOW- |
| 1 | 489 369 R1 | HANGER ASSY, FRONT |
| | 364 436 R1 | PIN, 3/16 X 1 HV COILED SPRING -2- |
| | 20 249 R1 | SCREW, 1/2-13 X 1 C-Z SLT-TRUSS -HD
MACH -NOTE- |
| | 17 433 R1 | BOLT, 1/2-13 X 1 C-Z HEX-HD MACH -3-
-NOTE- |
| | 460 908 R1 | WASHER, 17/32 X 1-1/2 X 11 GA C-Z
-4- -NOTE- |
| | 120 384 | WASHER, 1/2 C-Z MED LOCK -2- -NOTE- |
| | 120 378 | NUT, 1/2-13 HEX. -2- -NOTE- |
| 2 | 489 375 R1 | BRACKET ASSY, IDLER ADJUSTER -2- |
| | 120 393 | WASHER, 11/32 X 11/16 X .065 C-Z -2- |
| | 668 569 R1 | WASHER, 11/32 X 1-1/2 X .119 C-Z |
| | 411 597 R1 | NUT, 5/16-18 ZN NYLON INSERT -2- |
| 3 | 489 378 R1 | SPACER, IDLER ADJUSTER -2- |
| 4 | 489 607 R4 | SPRING, MULE DR. EXTENSION |
| 5 | 489 379 R1 | PIN, FRONT MTG |
| | 137 175 | PIN, 3/32 X 1-1/8 COT. |
| | 437 443 R1 | PIN, QUICK ATTACHABLE COT. |
| 6 | 493 164 R91 | PULLEY, DRIVE BELT IDLER -2- |
| | 18 253 R1 | NUT, 3/8-16 NYLON LOCK |
| | 120 377 | NUT, 3/8-16 C-Z HEX. -2- |
| | 180 130 | SCREW, 3/8-16 X 2 C-Z HEX-HD CAP |
| | 180 128 | SCREW, 3/8-16 X 1-3/4 C-Z HEX-HD CAP |
| | 120 382 | WASHER, 3/8 C-Z MED LOCK -2- |
| | 120 394 | WASHER, 13/32 X 11/16 X .065 C-Z -2- |
| 7 | 542 122 R91 | BEARING ASSY, IDLER PULLEY -2- |
| | | NOTE -USED WHEN MOUNTING TILLER ON CUB
CADET TRACTORS PRIOR TO 1968- |



REF. NO.	PART NUMBER	DESCRIPTION	CPE - 2
----------	-------------	-------------	---------

TILLER FRONT DRIVE
 -TRACTORS WITHOUT 3 SPINDLE MOWER-
 -1 TILLER-



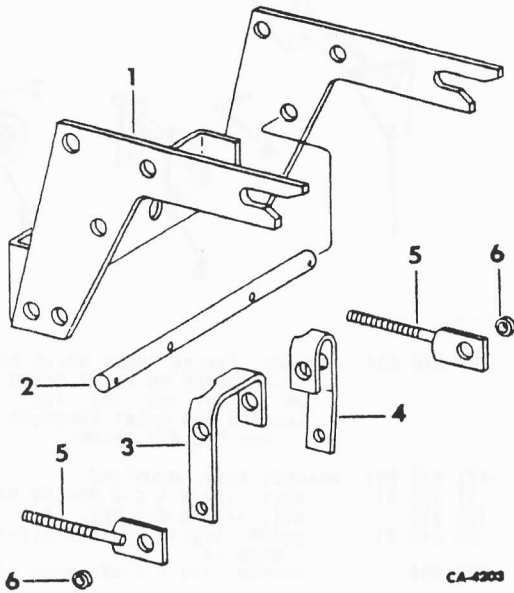
A-85848

- | | | |
|---|-------------|--|
| | 484 870 R91 | PACKAGE, TILLER FRONT DRIVE SERVICE
-REQUIRED TO MOUNT ROTOR TILLER
ON 70, 71, 100, 102, 122
AND 123 CUB CADET TRACTORS-
-400,000 AND BELOW- |
| 1 | 473 439 R91 | BRACKET ASSY, MOUNTING |
| | 17 433 R1 | BOLT, 1/2 X 1 C-Z HEX-HD MACH -2- |
| | 120 378 | NUT, 1/2-13 C-Z HEX. -2- |
| | 20 249 R1 | SCREW, 1/2-13 X 1 C-Z SLT-TRUSS-HD
MACH -2- |
| | 120 384 | WASHER, 1/2 C-Z MED LOCK -2- |
| 2 | 473 463 R92 | SUPPORT ASSY, IDLER |
| | 137 175 | PIN, 3/32 X 1-1/8 C-Z COT. -2- |
| 3 | 61 176 C92 | PULLEY, DRIVE BELT IDLER -2-
-REPLACES 489 398 R93- |
| | 18 779 R1 | BOLT, 3/8 X 1-1/2 C-Z HEX-HD MACH
-2- |
| | 120 377 | NUT, 3/8-16 C-Z HEX. -2- |
| | 120 382 | WASHER, 3/8 C-Z MED LOCK -2- |
| 4 | 624 479 R1 | BOLT, IDLER |
| | 411 597 R1 | NUT, 5/16-18 ESNA STOP |
| | 120 393 | WASHER, 11/32 X 11/16 X .065 C-Z -3- |



REF. NO.	PART NUMBER	DESCRIPTION	CPE-2
----------	-------------	-------------	-------

TILLER FRONT DRIVE
-TRACTORS WITHOUT FRONT DRIVE-
-1A TILLER-



493 165 R91 TILLER FRONT DRIVE PARTS PACKAGE
-REQUIRED TO MOUNT ON 70, 71, 72,
73, 100, 102, 104, 105, 106, 107,
122, 123, 124, 125, 126, 127, 147,
CUB CADET TRACTORS-
-FURNISH 487 045 R2 BELT-
-400,000 AND BELOW-

1	547 434 R2	HANGER ASSY, FRONT
2	547 435 R1	ROD, FRONT MOUNTING
3	489 601 R1	SUPPORT, IDLER LH
4	489 602 R1	SUPPORT, IDLER RH
	21 903 R1	WASHER, 17/32 X 3/4 X 16 GA C-Z -2-
	137 175	PIN, 3/32 X 1-1/8 C-Z COT. -2-
	364 436 R1	PIN, 3/16 X 1 HU COILED SPRING -2-
	20 249 R1	SCREW, 1/2-13 X 1 C-Z SLT-TRUSS-HD MACH
	17 433 R1	BOLT, 1/2-13 X 1 C-Z HEX-HD MACH -3-
	460 908 R1	WASHER, 17/32 X 1-1/2 X 11 GA C-Z -4-
	120 384	WASHER, 1/2 C-Z MED LOCK -2-
	120 378	NUT, 1/2-13 ZND HEX. -2-
5	489 375 R1	BRACKET ASSY, IDLER ADJUSTER -2-
	120 393	WASHER, 11/32 X 11/16 X .065 C-Z -2-
	668 569 R1	WASHER, 11/32 X 1-1/2 X .119 C-Z
	411 597 R1	NUT, 5/16-18 ZN NYLON INSERT -2-
6	489 378 R1	SPACER, IDLER ADJUSTER -2-
	180 130	SCREW, 3/8-16 X 2 C-Z HEX-HD CAP
	180 128	SCREW, 3/8-16 X 1-3/4 C-Z HEX-HD CAP
	120 382	WASHER, 3/8 C-Z MED LOCK -2-
	120 394	WASHER, 13/32 X 11/16 X .065 C-Z -2-
	120 377	NUT, 3/8-16 C-Z HEX. -2-
	18 253 R1	NUT, 3/8-16 NYLON LOCK

REF. NO.	PART NUMBER	DESCRIPTION	CPE-2
----------	-------------	-------------	-------

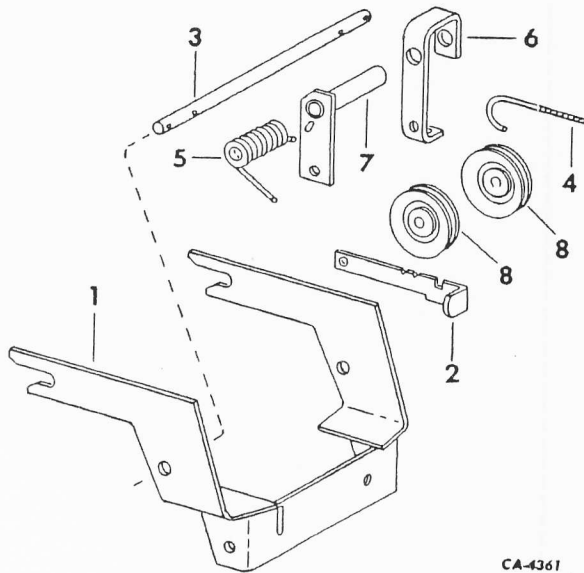
PRODUCT GRAPHICS

485 307 R91 PACKAGE, PRODUCT GRAPHICS
-CONSISTS OF
\$1 CADET
\$1 INTERNATIONAL
\$1 NO OIL IN GEAR BOX
\$1 SAFETY FIRST-



REF. NO.	PART NUMBER	DESCRIPTION	CPE-2	REF. NO.	PART NUMBER	DESCRIPTION	CPE-2
----------	-------------	-------------	-------	----------	-------------	-------------	-------

TILLER FRONT DRIVE



CA-4361

62 383 C91 PACKAGE, TILLER FRONT DRIVE SERVICE
 -REQUIRED TO MOUNT ON 86, 108, 109, 128, 129, 149, 169, 800, 1000, 1200, 1250, 1450, 1650-
 -400,001 AND ABOVE-
 -REPLACES 55 032 C91-

1	59 681 C1	HANGER ASSY, FRONT	
2	107 099 C1	RATCHET, IDLER	
9	413 953	NUT, 3/8 PHC P/T LOCK TYPE 5	
3	59 683 C1	SHAFT, IDLER PIVOT	
	137 185	PIN, 1/8 X 1 COT -4-	
	178 373 R1	WASHER, .531 X 1.000 X .056 -4-	
4	59 685 C1	BOLT, IDLER ADJUSTING	
	120 393	WASHER, .344 X .688 X .051	
	411 597 R1	NUT, 5/16 P/T LOCK TYPE 5	
5	59 691 C1	SPRING, MULE DRIVE IDLER	
6	106 678 C1	ARM, LH IDLER	
	180 126	BOLT, 3/8 X 1-1/2 TYPE 5	
	120 382	WASHER, 3/8 LOCK	
	120 377	NUT, 3/8 TYPE 5	
7	106 679 C1	ARM ASSY, RH IDLER	
	180 132	BOLT, 3/8 X 2-1/4 TYPE 5	
	120 382	WASHER, 3/8 LOCK	
	120 377	NUT, 3/8 TYPE 5	
	59 689 C1	WASHER, WAVE	
	25 544 R1	WASHER, .406 X .812 X .134 PHC HDN	
8	61 176 C92	PULLEY ASSY, DRIVE BELT IDLER -2-	



1 AND 1A TILLER

-14-

SECTION J



1 AND 1A TILLER

-14-

SECTION J

REF. NO.	PART NUMBER	DESCRIPTION	CPE-2
----------	-------------	-------------	-------

REF. NO.	PART NUMBER	DESCRIPTION	CPE-2
----------	-------------	-------------	-------





2 AND 2B TILLER

2 AND 2B TILLER

REF. NO.	PART NUMBER	DESCRIPTION	CPE-2
----------	-------------	-------------	-------

REF. NO.	PART NUMBER	DESCRIPTION	CPE-2
----------	-------------	-------------	-------

2 ROTARY TILLER
 BUILT 1974 TO 1980
 2B ROTARY TILLER
 BUILT 1980 AND SINCE

2 ROTARY TILLER -CONTINUED
 BUILT 1974 TO 1980
 2B ROTARY TILLER
 BUILT 1980 AND SINCE

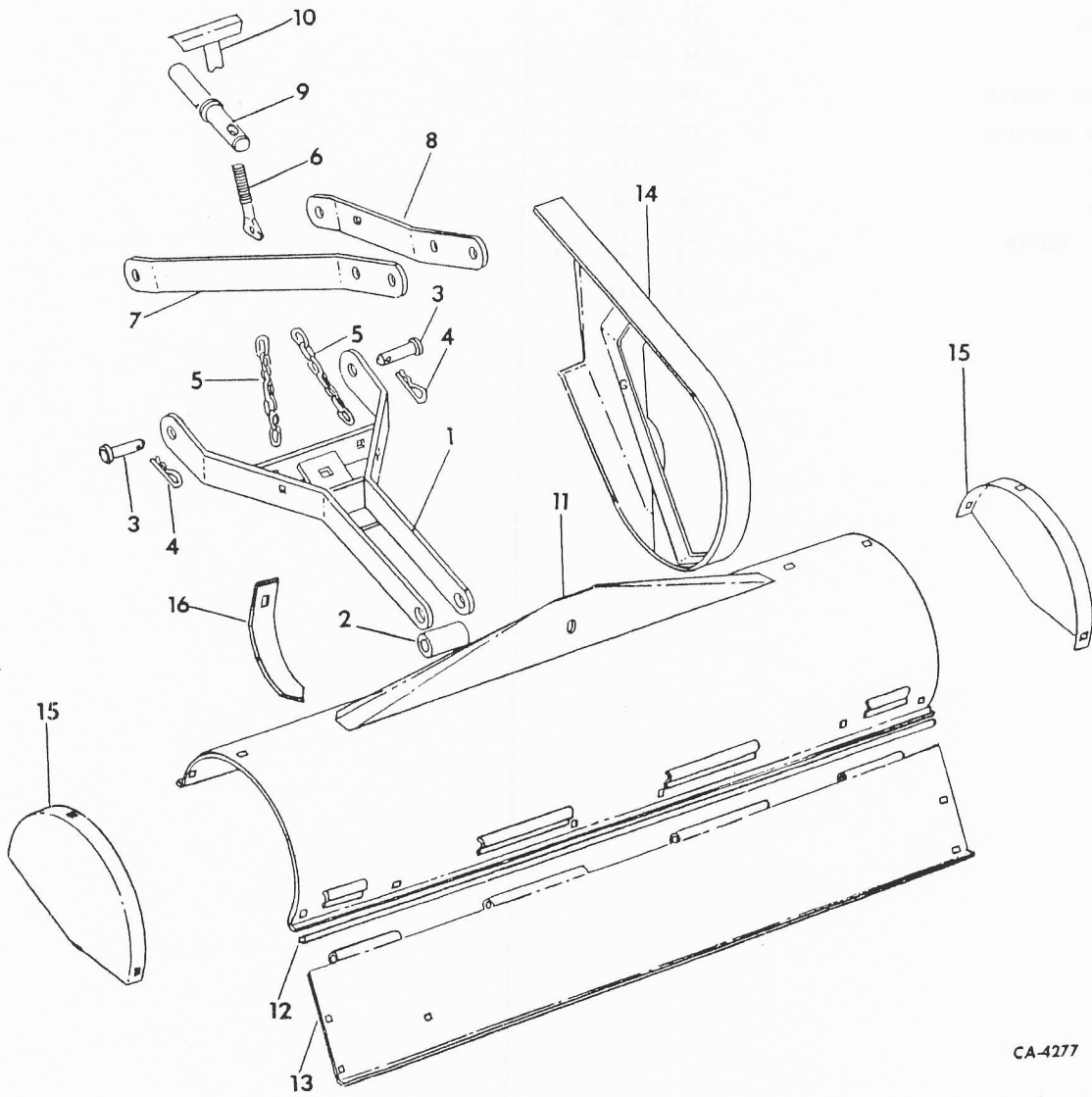
INDEX TO UNITS	DESCRIPTION	PAGE	GRID
DRIVE		18	J08
CHAIN		22	J12
TILLER FRONT		23	J13
GEAR BOX		19	J09
HITCH		16	J06
MOUNTING, TILLER		20	J10
PRODUCT GRAPHICS		20	J10
PULLEYS		20	J10
SHIELDS		16	J06
SPRING, HELPER		21	J11
		22	J12
TINES		21	J11



REF. PART NO.	NUMBER	DESCRIPTION	CPE-2	REF. PART NO.	NUMBER	DESCRIPTION	CPE-2
---------------	--------	-------------	-------	---------------	--------	-------------	-------

HITCH AND SHIELDS

HITCH AND SHIELDS -CONTINUED



CA-4277



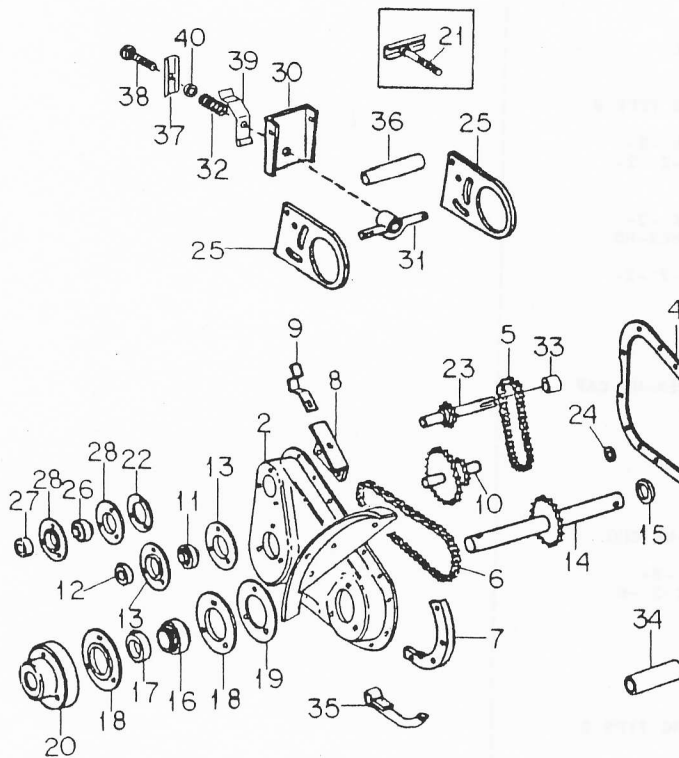
REF. NO.	PART NUMBER	DESCRIPTION	CPE-2
HITCH AND SHIELDS -CONTINUED			
1	485 286 R2 460 869 R1 180 192	BRACKET ASSY. LOWER SUPPORT NUT, 1/2-13 C-Z HEX. LOCK SCREW, 1/2-13 X 3-1/2 C-Z HEX-HD CAP	4
2	485 288 R1	BUSHING, PIVOT	
3	485 289 R1	PIN, CLEVIS -2-	
4	480 523 R1	PIN, QUICK ATTACHABLE COTTER -2-	
5	485 352 R1 598 803 R1	CHAIN, LIFT -2- BOLT, 5/16 X 1 ZND SQ-NK CRG TYPE 5 -2-	
9	412 083 120 386	NUT, 5/16-18 C-Z STOVER LOCK -2- WASHER, 5/16 X 3/4 X .051 C-Z -2-	
6	485 290 R1 9 412 083 180 081 120 386	ROD, ADJUSTMENT NUT, 5/16-18 C-Z STOVER LOCK -2- SCREW, 5/16-18 X 1-1/4 C-Z HEX-HD CAP WASHER, 5/16 X 3/4 X .051 C-Z -2-	
7	485 291 R1	BAR, SUPPORT LH	
8	485 292 R1 460 869 R1 189 314	BAR, SUPPORT RH NUT, 1/2-13 C-Z HEX. LOCK SCREW, 1/2-13 X 4-3/4 C-Z HEX-HD CAP	
9	485 294 R1 137 263	SHAFT ASSY, SUPPORT PIN, 3/16 X 2 COT.	
10	485 295 R2	TEE ASSY, DEPTH CONTROL	
11	62 252 C1 16 897 R1 9 412 083 120 386	SHIELD ASSY, SAFETY BOLT, 5/16-18 X 3/4 C-Z SQ-NK CRG -6- NUT, 5/16-18 C-Z HEX. LOCK -6- WASHER, 5/16 X 3/4 X .051 C-Z -6-	
12	62 253 C1	ROD, PIVOT	
13	62 254 C1	PLATE, BACK	
14	485 293 R1 598 803 R1 9 412 083 120 214	GUARD ASSY, BELT BOLT, 5/16 X 1 ZND SQ-NK CRG TYPE 5 NUT, 5/16-18 C-Z HEX. LOCK WASHER, 5/16 ZND REG LOCK	
15	485 282 R1 18 626 R1 16 559 R1 273 924	CAP, END -2- BOLT, 1/4 X 1/2 ZND SQ-NK CRG -6- WASHER, 17/64 X 5/8 X .036 ZND -6- NUT, 1/4-20 ZND HEX. LOCK -6-	
16	485 287 R1 17 351 R1 274 993	FLOW, SPRING TOOTH BOLT, 3/8-16 X 1 C-Z SQ-NK CRG NUT, 3/8-16 CDP HEX. LOCK	

REF. NO.	PART NUMBER	DESCRIPTION	CPE-2
HITCH AND SHIELDS -CONTINUED			



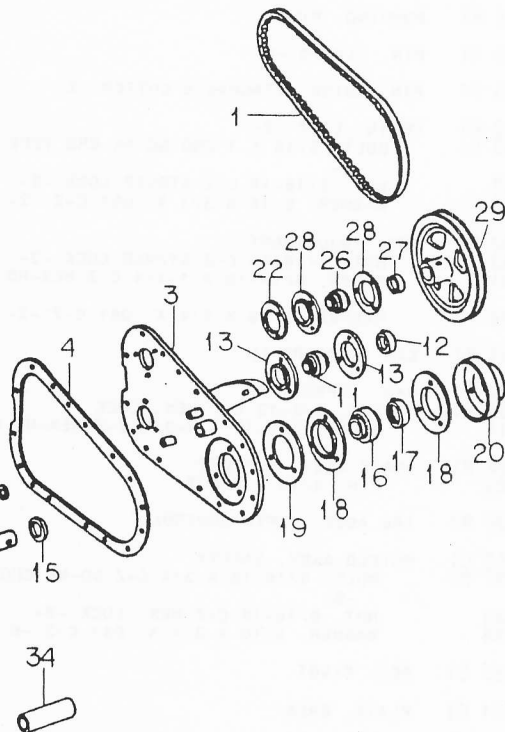
REF. NO.	PART NUMBER	DESCRIPTION	CPE-2
----------	-------------	-------------	-------

CHAIN DRIVE AND RELATED PARTS



REF. NO.	PART NUMBER	DESCRIPTION	CPE-2
----------	-------------	-------------	-------

CHAIN DRIVE AND RELATED PARTS -CONTINUED



CA04278 B

1	62 235 C1	BELT, DRIVE	
2	62 256 C1	HOUSING ASSY, CHAIN DRIVE	
3	62 257 C1	PLATE, HOUSING BACK	
	181 566	BOLT, 1/4-28 X 3/4 C-Z HEX-HD CAP	
	485 350 R1	NUT, 1/4-28 C-Z HEX. FLANGE LOCK	
4	485 264 R1	GASKET, CHAIN DRIVE HOUSING	
5	485 691 R1	CHAIN, MAIN DRIVE	
6	485 692 R1	CHAIN, TINE DRIVE	
7	485 265 R1	SHOE, FORMED	
8	485 266 R1	CLIP, MOUNTING BRACKET	
9	485 285 R1	CLIP, RETAINER	
	412 083	NUT, 5/16-18 C-Z HEX. LOCK	
	180 077	SCREW, 5/16-18 X 3/4 C-Z HEX-HD CAP	
	120 386	WASHER, 5/16 X 3/4 X .051 C-Z	
10	485 255 R2	SPROCKET ASSY, IDLER -10 & 28 T-	
11	666 589 R91	BEARING ASSY, W/O LOCKING COLLAR -2-	
12	455 102 R21	COLLAR, LOCKING W/SET SCREW -2-	
	102 572	SCREW, 1/4-20 X 5/8 SOC-HD SET -2-	

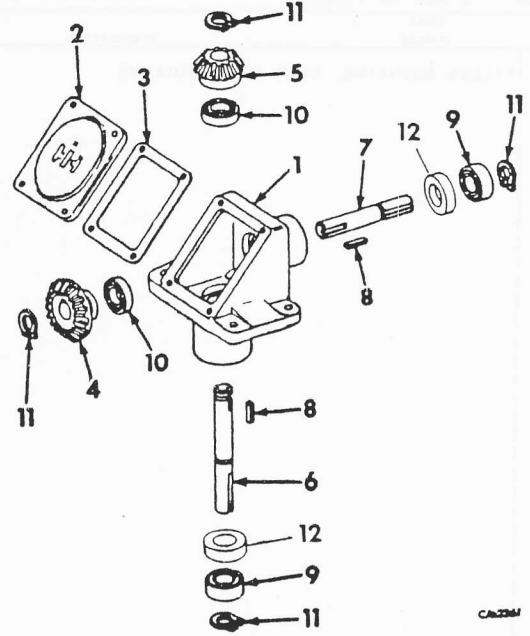
13	462 360 R1	FLANGE, BEARING -4-	
	16 897 R1	BOLT, 5/16-18 X 3/4 C-Z SQ-NK CRG	
	120 376	NUT, 5/16-18 C-Z HEX. -6-	
	120 214	WASHER, 5/16 C-Z MED LOCK -6-	
14	485 256 R2	SHAFT ASSY, MAIN DRIVE -18 T-	
15	485 257 R1	SPACER	
16	485 259 R91	BEARING W/LOCKING COLLAR -2-	
17	455 104 R11	COLLAR, LOCKING W/SET SCREW -2-	
	102 572	SCREW, 1/4-20 X 5/8 SOC-HD SET -2-	
18	485 261 R1	FLANGE, BEARING -4-	
	634 979 R1	BOLT, 3/8-16 X 1-1/2 C-Z SQ-NK CRG	
	120 377	NUT, 3/8-16 C-Z -12-	
	120 382	WASHER, 3/8 C-Z MED LOCK -6-	
19	485 262 R1	GASKET, FLANGE -2-	
20	485 263 R1	EXCLUDER, DUST -2-	
	63 720 C1	GASKET, FELT SEAL -2-	
	62 258 C1	O-RING	
21	485 271 R1	TEE, BELT ADJUSTMENT	
		-FOR NO. 2 TILLER ONLY-	
22	485 253 R1	SPACER -2-	
23	492 952 R2	SHAFT, INPUT	
24	485 250 R1	SEAL, ADHESIVE DUST -2-	
25	485 254 R1	PLATE, PIVOT -2-	



REF. NO.	PART NUMBER	DESCRIPTION	CPE - 2
CHAIN DRIVE AND RELATED PARTS - CONTINUED			
26	471 895 R91	BEARING, W/O LOCKING COLLAR -2-	
27	455 958 R11 120 572	COLLAR, LOCKING -2- SCREW, 1/4-20 X 3/4 SLT-RD-HD MACH -2-	
28	455 961 R1 12 872 R1 120 376 120 214	FLANGE, BEARING -4- BOLT, 5/16-18 X 1 C-Z SQ-NK CRG -6- NUT, 5/16-18 C-Z HEX. -6- WASHER, 5/16 C-Z MED LOCK -6-	
29	485 267 R1 21 324 R1 102 581	PULLEY, DRIVE KEY, 3/16 X 1-5/8 SQ PARALLEL SCREW, 5/16-18 X 3/8 SOC-HD CUP-PT -2-	
30	485 268 R1 18 627 R1 273 924	CHANNEL, BELT TIGHTENER -FOR NO. 2 TILLER ONLY- BOLT, 1/4-20 X 3/4 C-Z SQ-NK -2- NUT, 1/4-20 C-Z HEX. LOCK -2-	
31	485 269 R1 480 523 R1	ROD, ADJUSTMENT PIN, QUICK ATTACHABLE COTTER -2-	
32	480 270 R1 120 169 120 396	SPRING, COMPRESSION PIN, 5/32 X 1 COT. WASHER, 17/32 X 1-1/16 X .074 C-Z	
33	61 914 C1	SPACER, INPUT SHAFT	
34	62 250 C1 179 849 9 411 655	SPACER, MOUNTING BRACKET SCREW, 3/8-16 X 2-1/2 HEX-HD CAP NUT, 3/8-16 CAD HEX. LOCK	
35	62 251 C1 179 889 102 637	ADJUSTMENT, CHAIN SCREW, 1/2-13 X 2 HEX-HD CAP NUT, 1/2-13 HEX.	
36	871 623 R1	SPACER, 1/2 X 2-3/4 PIPE -FOR NO. 2 TILLER ONLY-	
37	223 437 C1	CHANNEL, ADJUSTMENT -FOR NO. 2B TILLER ONLY-	
38	223 435 C1	BOLT, ADJUSTMENT -FOR NO. 2B TILLER ONLY-	
39	223 434 C1	CLIP, ADJ. STOP -FOR NO. 2B TILLER ONLY-	
40	610 993 R1	SPACER -FOR NO. 2B TILLER ONLY-	



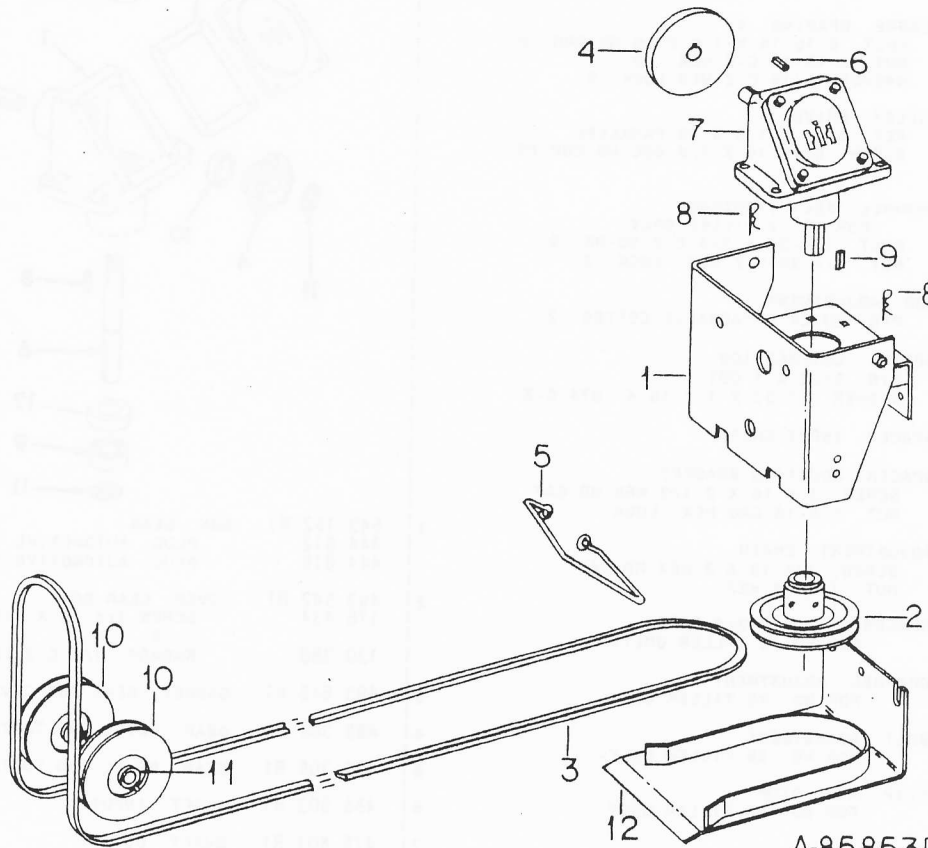
REF. NO.	PART NUMBER	DESCRIPTION	CPE - 2
GEAR BOX -90 DEGREE-			
1	543 152 R1 444 612 444 618	BOX, GEAR PLUG, AUTOMOTIVE 1/8 NPT SQ-HD PLUG, AUTOMOTIVE 1/4 NPT SQ-HD	
2	493 542 R1 178 434 120 380	COVER, GEAR BOX SCREW 1/4-14 X 1/2 C-Z HEX-HD CAP -4- WASHER, 1/4 C-Z LOCK -4-	
3	493 543 R1	GASKET, GEAR BOX COVER	
4	485 304 R1	GEAR, BEVEL -30 TOOTH-	
5	485 305 R1	GEAR, BEVEL -20 TOOTH-	
6	485 303 R1	SHAFT, INPUT	
7	475 601 R1	SHAFT, OUTPUT	
8	475 642 R1	KEY, 3/16 X 11/16 SQ PARALLEL -2-	
9	475 627 R91	BEARING, BALL -2-	
10	475 628 R91	BEARING, BALL -2-	
11	269 181 R1	RING, RETAINING -4-	
12	485 306 R1	SEAL, OIL -2-	





REF. NO.	PART NUMBER	DESCRIPTION	CPE-2
----------	-------------	-------------	-------

TILLER MOUNTING, GEAR BOX & PULLEYS



1	485 245 R1	MOUNTING ASSY, GEAR BOX
	550 796 R1	BOLT, 3/8 X 1-1/4 ZND SQ-NK CRG -4-
	120 377	NUT, 3/8-16 C-Z -4-
	165 420 C1	BOLT, 3/8 X 1-1/4 HEX-HD LOCK -2-
	154 273 C1	SCREW, 3/8-16 X 1 LOCK -2-
	120 382	WASHER, 3/8 C-Z MED LOCK -8-
2	485 246 R91	PULLEY W/SET SCREWS -FOR NO. 2 TILLER-
2	135 554 C1	PULLEY W/SET SCREW -FOR NO. 2B TILLER-
	102 581	SCREW, 5/16-18 X 3/8 SOC-HD SET -2-
3	.61 959 C1	BELT, PTO DRIVE -FOR NO. 2 TILLER-
3	135 553 C1	BELT, PTO DRIVE -FOR NO. 2B TILLER-
4	485 247 R91	PULLEY W/SET SCREWS
	137 218	PIN, 5/32 X 1-1/4 COT.
	102 581	SCREW, 5/16-18 X 3/8 SOC-HD SET -2-
5	56 571 C1	GUIDE, BELT -HYDRO TRANSMISSION-
		-FOR NO. 2 TILLER ONLY-
5	485 300 R1	GUIDE, BELT -GEAR TRANSMISSION-
		-FOR NO. 2 TILLER ONLY-
	180 122	SCREW, 3/8-16 X 1 C-Z HEX-HD CAP -2-
	446 548	WASHER, 3/8 X 3/4 X .051 C-Z -2-
6	474 098 R1	KEY, 3/16 X 1-1/4 SQ PARALLEL
7		BOX ASSY, -90 DEGREE-
		-FOR COMPONENTS SEE LIST
		OF PARTS UNDER DETAILS OF
		90 DEG GEAR BOX-
8	480 523 R1	PIN, QUICK ATTACHABLE COTTER -4-
9	21 325 R1	KEY, 3/16 X 2 SQ PARALLEL



REF. NO.	PART NUMBER	DESCRIPTION	CPE-2
----------	-------------	-------------	-------

TILLER MOUNTING, GEAR BOX & PULLEYS -CONTINUED

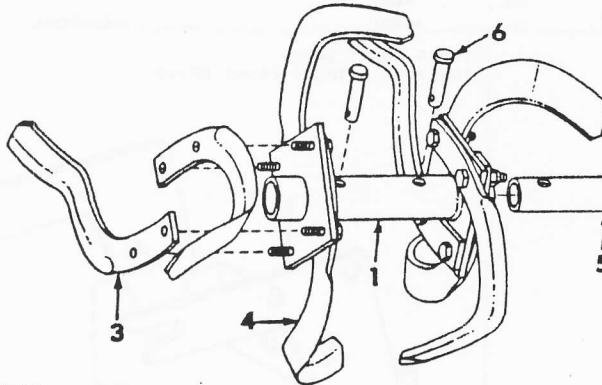
4		PULLEY, DRIVE BELT IDLER -2-
		-REFER TO TILLER FRONT DRIVE UNIT-
6		KEY, 3/16 X 2 SQ PARALLEL
7		BOX ASSY, -90 DEGREE-
		-FOR COMPONENTS SEE LIST
		OF PARTS UNDER DETAILS OF
		90 DEG GEAR BOX-
8		PIN, QUICK ATTACHABLE COTTER -4-
9		KEY, 3/16 X 2 SQ PARALLEL
10		PULLEY, DRIVE BELT IDLER -2-
		-REFER TO TILLER FRONT DRIVE UNIT-
11	542 122 R91	BEARING ASSY, IDLER PULLEY -2-
12	79 954 C1	GUARD, DRIVE BELT
	120 377	-FOR NO. 2B TILLER-
		NUT, 3/8 TYPE 5 -2-
		PRODUCT GRAPHICS
	542 590 R1	PRODUCT GRAPHIC, CAUTION
		NOTE-THE FOLLOWING PRODUCT GRAPHIC PKGS
		MAY BE REQUIRED FOR YOUR MACHINE-
	77 583 C91	PACKAGE, IH TRADEMARK -LARGE SIZE-
		-CONSISTS OF
		\$IH TRADEMARK 6.58 X 7.09 -2-
		\$IH TRADEMARK 7.68 X 8.27 -2-
		\$IH TRADEMARK 10.24 X 11.02 -2-
	77 582 C91	PACKAGE, IH TRADEMARK -MEDIUM SIZE-
		-CONSISTS OF
		\$IH TRADEMARK 3.66 X 3.94 -2-
		\$IH TRADEMARK 4.39 X 4.72 -2-
		\$IH TRADEMARK 5.48 X 5.91 -2-
	77 581 C91	PACKAGE, IH TRADEMARK -SMALL SIZE-
		-CONSISTS OF
		\$IH TRADEMARK 1.46 X 1.57 -2-
		\$IH TRADEMARK 2.19 X 2.36 -2-
		\$IH TRADEMARK 2.93 X 3.15 -2-
	547 496 R92	PACKAGE, INTERNATIONAL NAME PRODUCT
		GRAPHICS

A-85853D



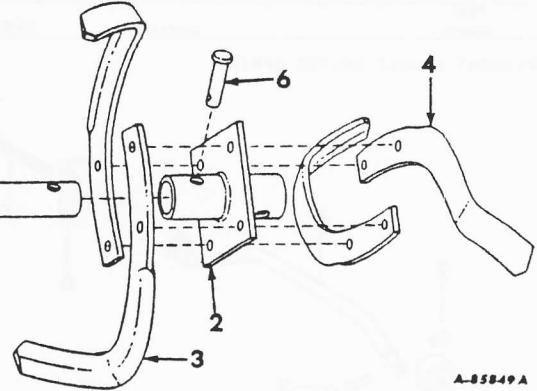
REF. NO.	PART NUMBER	DESCRIPTION	CPE-2	REF. NO.	PART NUMBER	DESCRIPTION	CPE-2
----------	-------------	-------------	-------	----------	-------------	-------------	-------

TINES AND RELATED PARTS



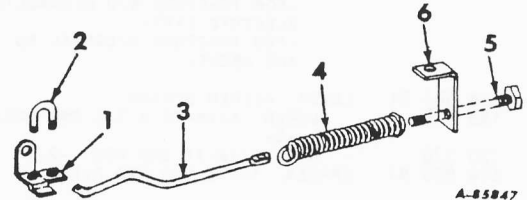
- 1 62 255 C1 MOUNTING, TINE -2-
- 2 NOT USED IN THIS APPLICATION
- 3 485 348 R1 TINE, LH -12-
- 4 485 349 R1 TINE, RH -12-
- 274 636 NUT, 7/16-20 CDP HEX. LOCK -24-
- 181 670 SCREW, 7/16-20 X 1-1/2 C-Z HEX-HD CAP -24-
- 5 NOT USED IN THIS APPLICATION
- 6 362 840 R1 PIN, SHEAR -2-
- 120 169 PIN, 5/32 X 1 C-Z COT. -2-

TINES AND RELATED PARTS -CONTINUED



A-85849A

IMPLEMENT HANDLE HELPER SPRING



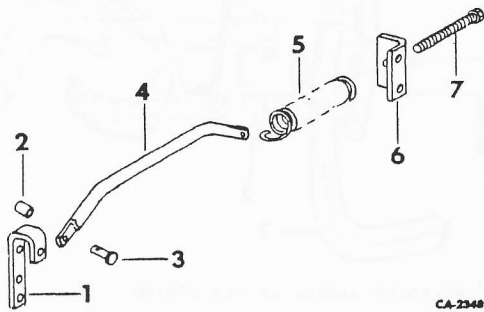
A-85847

- 399 481 R91 IMPLEMENT HANDLE HELPER SPRING PARTS ACCESSORY
-FOR NO. 2 TILLER ONLY-
-TRACTORS W/O HYDRAULIC OR ELECTRIC LIFT-
-SERIAL NO. 400,000 AND BELOW-
- 1 485 296 R1 BRACKET, MOUNTING
- 2 PO 22 288 BOLT, U
- 9 412 083 NUT, 5/16-18 C-Z STOVER LOCK -2-
- 3 485 297 R1 ROD, LIFT
- 120 169 PIN, 5/32 X 1 COT.
- 120 396 WASHER, 17/32 X 1-1/16 X .074 C-Z
- 4 485 298 R1 SPRING ASSY, TENSION
- 5 485 351 R1 BOLT, ADJUSTMENT
- 6 485 299 R1 BRACKET, MOUNTING
- 180 122 SCREW, 3/8-16 X 1 X C-Z HEX-HD CAP



REF. NO.	PART NUMBER	DESCRIPTION	CPE-2
----------	-------------	-------------	-------

IMPLEMENT HANDLE HELPER SPRING

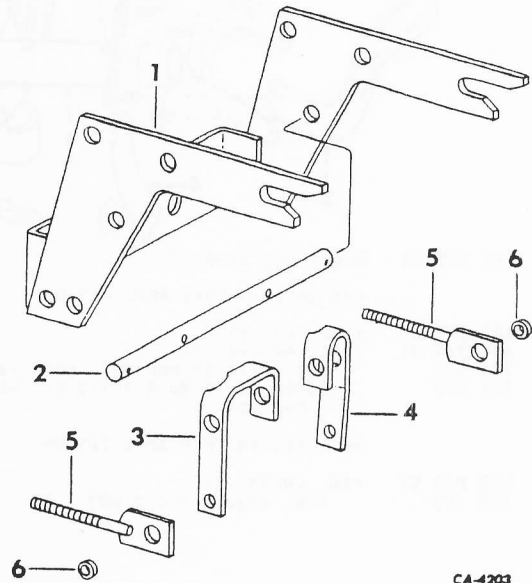


	548 380 R91	PARTS ACCESSORY, IMPLEMENT HANDLE HELPER SPRING -FOR TRACTORS W/O HYDRAULIC OR ELECTRIC LIFT- -FOR TRACTORS W/SERIAL NO. 400,001 AND ABOVE-	
1	548 381 R1 180 078	LEVER, HELPER SPRING SCREW, 5/16-18 X 7/8 ZND HEX-HD CAP -2-	
	120 376	NUT, 5/16-18 ZND HEX. -2-	
2	878 986 R1	SPACER, 1/4 X 5/8 STD PIPE	
3	21 941 R1 178 373 R1 12 235 R1	PIN, 5/16 X 1-7/8 ZND STD-HD WASHER, 17/32 X 1 X 16 GA C-Z PIN, 1/8 X 5/8 C-Z COT.	
4	548 382 R1	ROD, HELPER SPRING	
5	485 298 R1	SPRING, TENSION	
6	548 383 R1 180 120	BRACKET, HELPER SPRING SCREW, 3/8-16 X 3/4 ZND HEX-HD CAP -2-	
	120 377	NUT, 3/8-16 ZND HEX. -2-	
7	385 351 R1	BOLT, ADJUSTMENT	

CA-2348



REF. NO.	PART NUMBER	DESCRIPTION	CPE-2
----------	-------------	-------------	-------

TILLER FRONT DRIVE
-TRACTORS WITHOUT FRONT DRIVE-

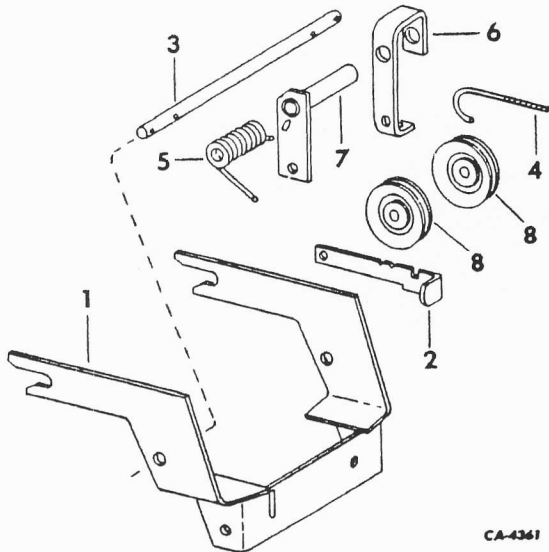
	493 165 R91	TILLER FRONT DRIVE PARTS PACKAGE -FOR NO. 2 TILLER ONLY- -REQUIRED TO MOUNT ON 71, 72, 73, 100, 104, 105, 106, 107, 122, 123, 124, 125, 126, 127, 147, CUB CADET TRACTORS- -FURNISH 487 045 R2 BELT- -SERIAL NO. 400,000 AND BELOW-	
1	547 434 R2	HANGER ASSY, FRONT	
2	547 435 R1	ROD, FRONT MOUNTING	
3	489 601 R1	SUPPORT, IDLER LH	
4	489 602 R1 21 903 R1 137 175 364 436 R1 20 249 R1 17 433 R1 460 908 R1 120 384 120 378	SUPPORT, IDLER RH WASHER, 17/32 X 3/4 X 16 GA C-Z -2- PIN, 3/32 X 1-1/8 C-Z COT. -2- PIN, 3/16 X 1 HU COILED SPRING -2- SCREW, 1/2-13 X 1 C-Z SLT-TRUSS-HD MACH BOLT, 1/2-13 X 1 C-Z HEX-HD MACH -3- WASHER, 17/32 X 1-1/2 X 11 GA C-Z -4- WASHER, 1/2 C-Z MED LOCK -2- NUT, 1/2-13 ZND HEX. -2-	
5	489 375 R1 120 393 668 569 R1 411 597 R1	BRACKET ASSY, IDLER ADJUSTER -2- WASHER, 11/32 X 11/16 X .065 C-Z -2- WASHER, 11/32 X 1-1/2 X .119 C-Z NUT, 5/16-18 ZN NYLON INSERT -2-	
6	489 378 R1 180 130 180 128 120 382 120 394 120 377 18 253 R1	SPACER, IDLER ADJUSTER -2- SCREW, 3/8-16 X 2 C-Z HEX-HD CAP SCREW, 3/8-16 X 1-3/4 C-Z HEX-HD CAP WASHER, 3/8 C-Z MED LOCK -2- WASHER, 13/32 X 11/16 X .065 C-Z -2- NUT, 3/8-16 C-Z HEX. -2- NUT, 3/8-16 NYLON LOCK	

CA-4203



REF. NO.	PART NUMBER	DESCRIPTION	CPE-2
----------	-------------	-------------	-------

TILLER FRONT DRIVE
FOR TRACTORS WITH SERIAL
NO. 400.001 TO 665000

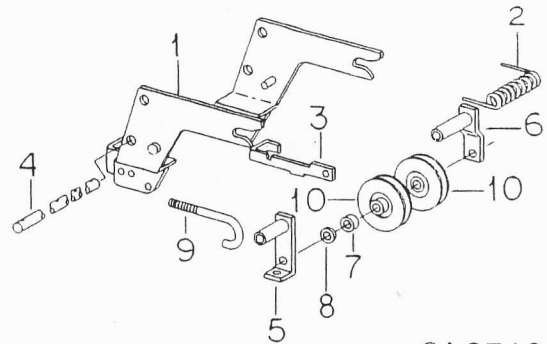


	62 383 C91	PACKAGE, TILLER FRONT DRIVE
1	59 681 C1	HANGER ASSY, FRONT
2	107 099 C1	RATCHET, IDLER
9	413 953	NUT, 3/8-16 PHC HEX. LOCK
3	59 683 C1	SHAFT, IDLER PIVOT
	137 185	PIN, 1/8 X 1 ZND COT. -4-
	178 373 R1	WASHER, 17/32 X 1 X 16 GA ZND -4-
4	59 685 C1	BOLT, IDLER ADJUSTING
	120 393	WASHER, .344 X .688 X .051 ZND
	411 597 R1	NUT, 5/16-18 NYLON INSERT LOCK
5	59 691 C1	SPRING, MULE DRIVE IDLER
6	106 678 C1	ARM, LH IDLER
	180 126	SCREW, 3/8-16 X 1-1/2 ZND HEX-HD CAP
	120 382	WASHER, 3/8 ZND REG LOCK
	120 377	NUT, 3/8-16 ZND HEX.
7	106 679 C1	ARM ASSY, RH IDLER
	180 132	SCREW, 3/8-16 X 2-1/4 ZND HEX-HD CAP
	120 382	WASHER, 3/8 ZND REG LOCK
	120 377	NUT, 3/8-16 ZND HEX.
	59 689 C1	WASHER, WAVE
	25 544 R1	WASHER, 3/8 TYPE C PHC HARDENED
8	61 176 C92	PULLEY ASSY, DRIVE BELT IDLER -2-
8	493 164 R91	PULLEY ASSY, DRIVE BELT IDLER -2- -HEAVY DUTY-



REF. NO.	PART NUMBER	DESCRIPTION	CPE-2
----------	-------------	-------------	-------

TILLER FRONT DRIVE PACKAGE
-FOR 82 SERIES CUB CADET TRACTORS EXCEPT
1982 WITH SERIAL NO. 665001 AND ABOVE-



		PACKAGE, ADAPTING
1	132 467 C2	HANGER ASSY, FRONT
	137 185	PIN, 1/8 X 1 COT -3-
	21 796 R1	WASHER, .656 X 1.000 X .054 -3-
2	132 488 C2	SPRING, MULE DRIVE IDLER
3	135 552 C2	RATCHET, IDLER
4	140 378 C1	SHAFT, IDLER PIVOT
5	144 683 C1	ARM ASSY, LH IDLER
6	144 682 C1	ARM ASSY, RH IDLER
7	561 277 R1	SPACER
	180 137	BOLT, 3/8 X 2-3/4 TYPE 5
	120 394	WASHER, .406 X .812 X .051
	120 382	WASHER, 3/8 LOCK -2-
	120 377	NUT, 3/8 TYPE 5 -2-
	180 126	BOLT, 3/8 X 1-1/2 TYPE 5
8	59 689 C1	WASHER, WAVE
9	413 953	NUT, 3/8 PHC P/T LOCK TYPE 5
9	132 494 C2	BOLT, IDLER ADJUSTER
9	412 083	NUT, 5/16 CAD P/T LOCK TYPE 5
	120 393	WASHER, .344 X .688 X .051
10	132 496 C1	PULLEY, DRIVE BELT IDLER -2-



REF. NO.	PART NUMBER	DESCRIPTION	CPE-2
----------	-------------	-------------	-------

REF. NO.	PART NUMBER	DESCRIPTION	CPE-2
----------	-------------	-------------	-------



48 ROTARY TILLER

48 ROTARY TILLER

REF. NO.	PART NUMBER	DESCRIPTION	CPE-2
----------	-------------	-------------	-------

REF. NO.	PART NUMBER	DESCRIPTION	CPE-2
----------	-------------	-------------	-------

48 ROTARY TILLER
BUILT 1980 AND SINCE

INDEX TO UNITS	DESCRIPTION	PAGE	GRID
FRAME		26	J16
GEAR BOX		30	J20
		31	J21
TINES		28	J18
DRIVE		29	J19
WEIGHT BRACKET		30	J20

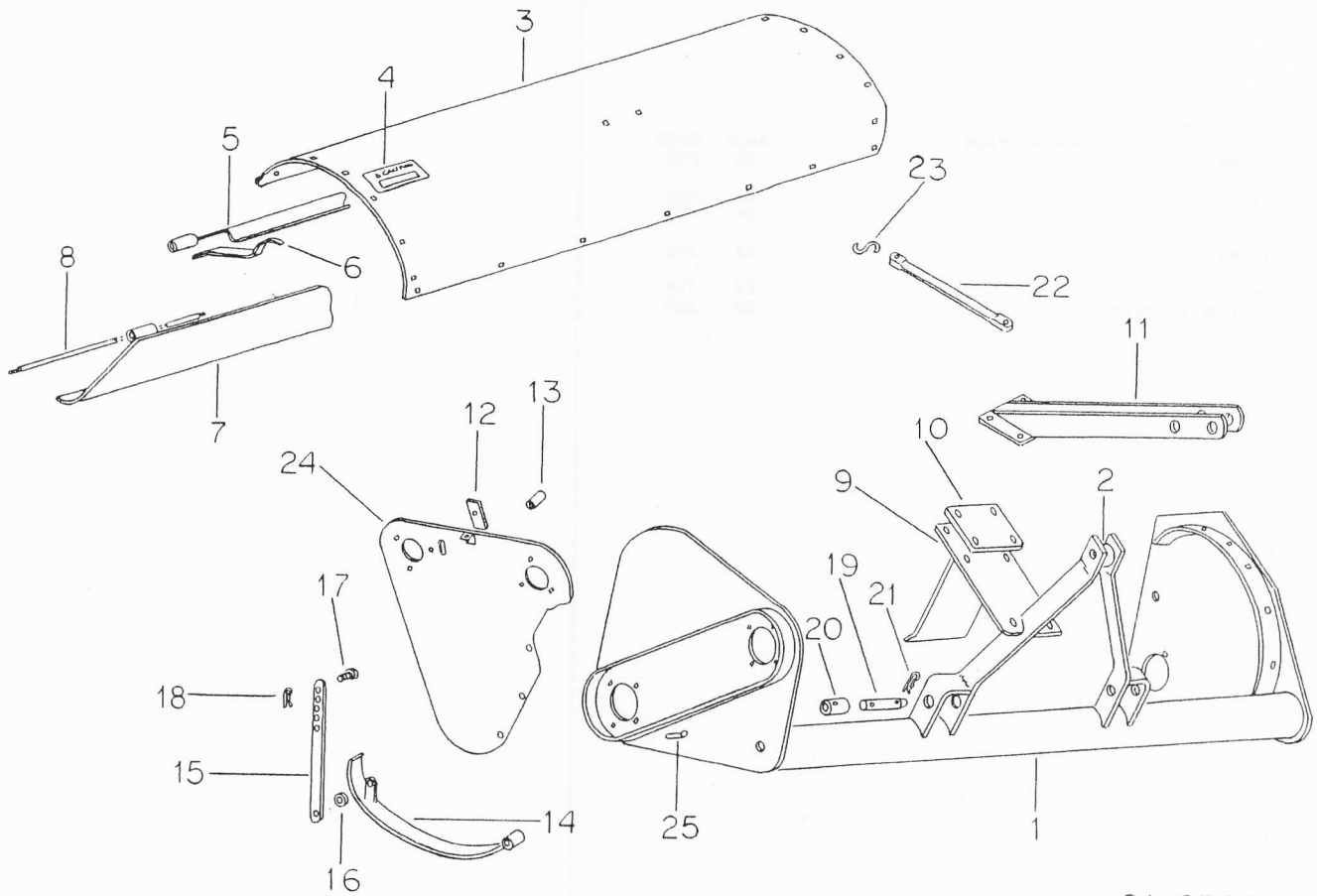


REF. NO.	PART NUMBER	DESCRIPTION	CPE-2
----------	-------------	-------------	-------

REF. NO.	PART NUMBER	DESCRIPTION	CPE-2
----------	-------------	-------------	-------

FRAME

FRAME -CONTINUED



CA-07082

1	79 066 C1	FRAME	
2	610 395 R1	SPACER, MAST	
3	79 068 C91	SHROUD W/PRODUCT GRAPHIC	
4	542 590 R1	PRODUCT GRAPHIC, CAUTION	
	598 809 R1	BOLT, 3/8 X 3/4 CRG TYPE 5 -12-	
9	411 655	NUT, 3/8 CAD P/T LOCK TYPE 5 -12-	
5	79 076 C1	BRACKET, HINGE	
	27 607 R1	SCREW, 5/16 X 3/4 H/WHD TAP -7-	
9	411 655	NUT, 3/8 CAD P/T LOCK TYPE 5 -7-	
6	79 077 C1	SUPPORT -2-	
	495 967 R1	BOLT, 3/8 X 1 CRG TYPE 5 -4-	
9	411 655	NUT, 3/8 CAD P/T LOCK TYPE 5 -4-	
7	79 078 C1	BLADE, LEVEL	
8	79 079 C1	ROD, HINGE	
9	411 655	NUT, 3/8 CAD P/T LOCK TYPE 5	
9	79 070 C1	SUPPORT, MOUNT	
	180 122	BOLT, 3/8 X 1 TYPE 5 -4-	
	120 394	WASHER, .406 X .812 X .051 -4-	
9	411 655	NUT, 3/8 CAD P/T LOCK TYPE 5 -4-	

10	79 069 C1	SPACER	
	180 124	BOLT, 3/8 X 1-1/4 TYPE 5 -4-	
	120 382	WASHER, 3/8 LOCK -4-	
	120 394	WASHER, .406 X .812 X .051 -4-	
11	79 067 C1	LINK	
	180 185	BOLT, 1/2 X 2-1/2 TYPE 5	
	120 396	WASHER, .531 X 1.062 X .074 -2-	
9	413 967	NUT, 1/2 CAD P/T LOCK TYPE 5	
12	79 080 C1	BAR, IDLER SUPPORT - STRAP -	
	180 190	BOLT, 1/2 X 3 TYPE 5	
13	517 899 R1	SPACER, 1/2 X 2 FRAME SUPPORT	
9	413 967	NUT, 1/2 CAD P/T LOCK TYPE 5	
14	79 081 C1	SHOE -2-	
	271 725	BOLT, 5/8 X 2-1/2 TYPE 5 -2-	
	124 589	NUT, 5/8 TYPE 5 -2-	
15	79 082 C1	BAR, ADJUST -2-	
	180 177	BOLT, 1/2 X 1-1/2 TYPE 5 -2-	
16	79 083 C1	WASHER -2-	
9	413 967	NUT, 1/2 CAD P/T LOCK TYPE 5 -2-	
17	79 084 C1	BOLT, SPECIAL -2-	
9	413 969	NUT, 5/8 CAD P/T LOCK TYPE 5 -2-	
	120 396	WASHER, .531 X 1.062 X .074 -2-	



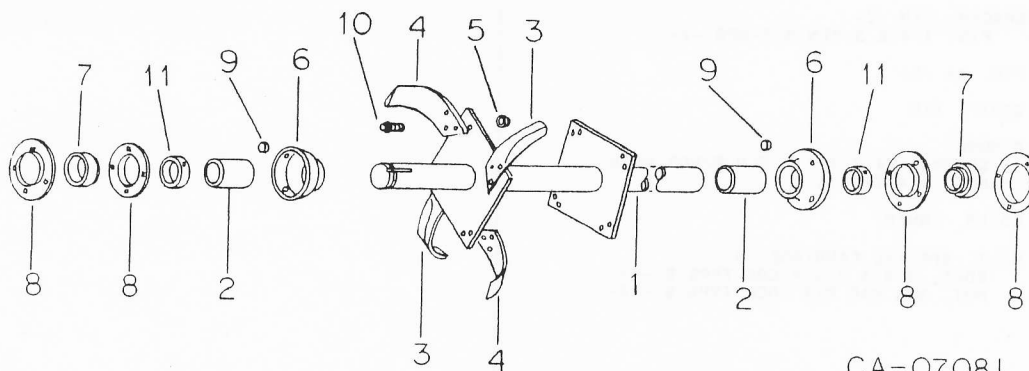
REF. NO.	PART NUMBER	DESCRIPTION	CPE-2	REF. NO.	PART NUMBER	DESCRIPTION	CPE-2
	FRAME -CONTINUED						
18	71 398 C1	PIN, QA -2-					
19	79 085 C1	PIN, LINK -2-					
20	79 086 C1 18 561 R1	SPACER, PIN -2- PIN, 1/4 X 3 PLN SLT-SPR -2-					
21	480 523 R1	PIN, QA -2-					
22	79 087 C1	STRAP, TIE					
23	79 088 C1 113 961 120 375	S-HOOK SCREW, 1/4 X 1-1/4 PLN R/HDS MACH NUT, 1/4 TYPE 5					
24	79 074 C1	COVER, INNER					
25	79 071 C1 27 452 R1 9 411 655	BOLT, SPECIAL CARRIAGE -4- BOLT, 3/8 X 2-3/4 CRG TYPE 5 -8- NUT, 3/8 CAD P/T LOCK TYPE 5 -12-					



REF. NO.	PART NUMBER	DESCRIPTION	CPE-2	REF. NO.	PART NUMBER	DESCRIPTION	CPE-2
----------	-------------	-------------	-------	----------	-------------	-------------	-------

TINES

TINES -CONTINUED



CA-07081

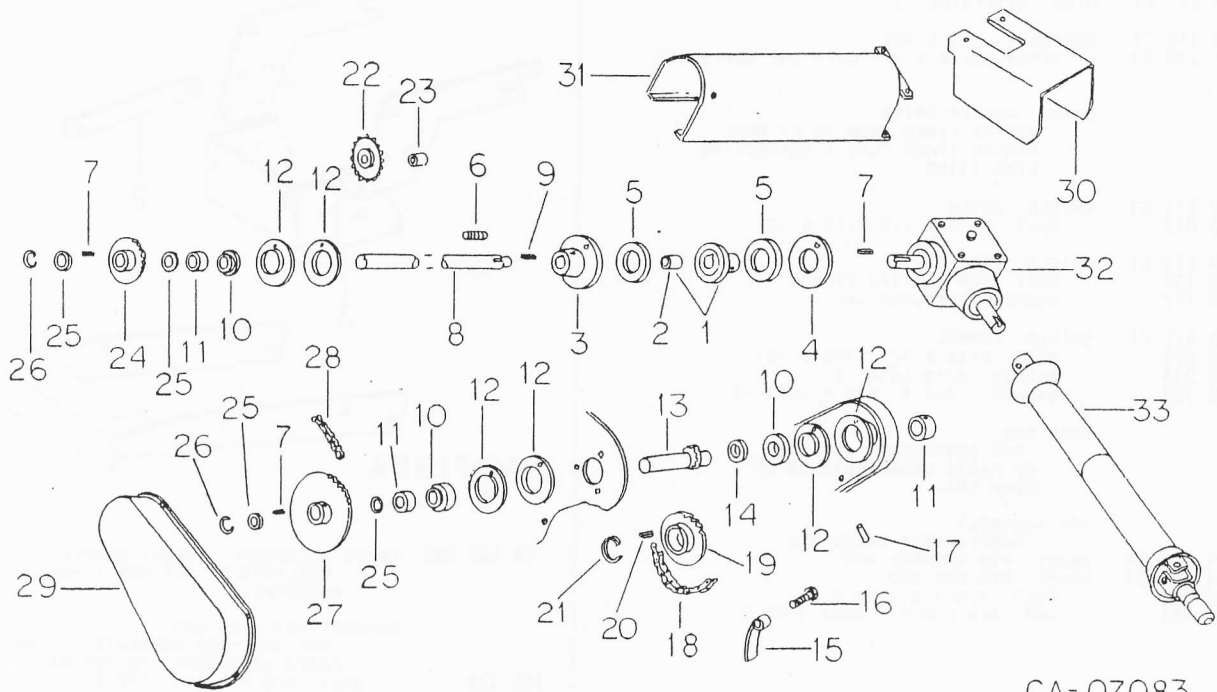
1	79 090 C1	SHAFT, ROTOR	
2	79 091 C1	SPACER, TINE SHAFT -2-	
3	79 092 C1	TINE LH -12-	
4	79 093 C1	TINE RH -12-	
5	79 094 C1	NUT, SPECIAL -48-	
6	79 095 C1	RETAINER, BRG GUARD -2-	
7	663 559 R91	BEARING LESS COLLAR	
8	79 096 C1	FLANGE -4-	
	466 972 R1	BOLT, 1/2 X 1-3/4 CRG TYPE 5 -4-	
	465 567 R1	BOLT, 1/2 X 1-1/2 CRG TYPE 5 -4-	
9	79 097 C1	WASHER -4-	
	120 378	NUT, 1/2 TYPE 5 -8-	
10	236 481 R1	BOLT, 3/8 X 1-1/8 TYPE 8 -48-	
11	455 112 R11	COLLAR W/SET SCREW -2-	



REF. NO.	PART NUMBER	DESCRIPTION	CPE - 2	REF. NO.	PART NUMBER	DESCRIPTION	CPE - 2
----------	-------------	-------------	---------	----------	-------------	-------------	---------

DRIVE

DRIVE -CONTINUED



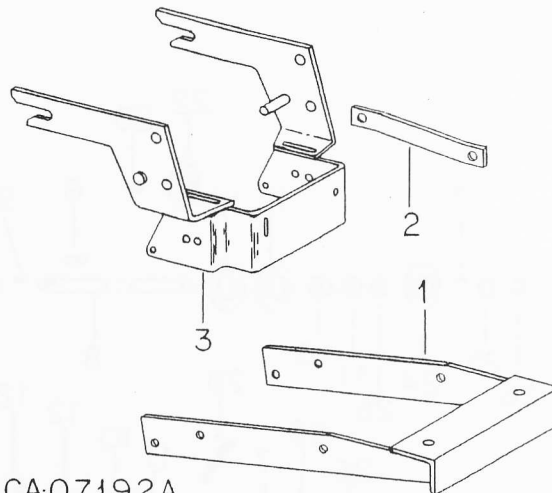
CA-07083

1	79 098 C91	HUB ASSY		13	79 105 C1	SHAFT, SPROCKET	
	180 048	BOLT, 1/4 X 2-1/2 TYPE 5		14	79 106 C1	SPACER, UPPER DRIVE SHAFT	
	273 924	NUT, 1/4 CAD P/T LOCK TYPE 5		15	79 107 C1	ARM, CHAIN TIGHTENER	
2	79 099 C1	BUSHING		16	79 108 C1	BOLT, SPECIAL HEX	
3	79 100 C1	HUB, END PLATE			9 412 083	NUT, 5/16 CAD P/T LOCK TYPE 5 -2-	
4	79 101 C1	RETAINER, PRESSURE - PLATE		17	79 109 C1	SCREW, HEX SOCKET SET	
5	79 102 C1	DISC, CLUTCH -2-		18		CHAIN, DRIVE	
	180 091	BOLT, 5/16 X 2-1/2 TYPE 5 -8-				USE 46 LINKS FROM A 10 FT ROLL	
6	79 103 C1	SPRING, COMPRESSION -8-				MARKED 611362R91 PLUS 1	
	9 412 083	NUT, 5/16 CAD P/T LOCK TYPE 5 -8-				CONNECTING LINK 574532R91	
	22 210 R1	SCREW, 5/16 X 1/2 C/PT ZNP HDL/S SET -5-		19	79 110 C1	SPROCKET, DRIVE 20T	
7	0 53	KEY, 1/4 X 2 SQ PARALLEL -3-		20	454 353 R1	KEY, 3/8 X 1 SQ PARALLEL	
8	79 104 C1	SHAFT, DRIVE		21	69 339 R1	RING, RETAINING	
9	Y 24 430	KEY, 1/4 X 1-1/2 SQ PARALLEL		22	565 442 R91	SPROCKET, IDLER	
10	214 366 C91	BEARING LESS COLLAR, BALL -3-			180 188	BOLT, 1/2 X 2-3/4 TYPE 5	
11	455 102 R21	COLLAR W/SET SCREW -3-			9 413 967	NUT, 1/2 CAD P/T LOCK TYPE 5	
12	462 360 R1	FLANGE, BRG -6-		23	573 713 R1	SPACER, IDLER	
					120 396	WASHER, .531 X 1.062 X .074 -4-	
				24	79 111 C1	SPROCKET, 16T	



REF. NO.	PART NUMBER	DESCRIPTION	CPE - 2
		DRIVE -CONTINUED	
25	79 112 C1	WASHER, HVY -4-	
26	454 417 R1	RING, RETAINING -2-	
27	79 113 C1 22 210 R1	SPROCKET, DRIVE 40T SCREW, 5/16 X 1/2 C/PT ZNP HDL/S SET -5-	
28		CHAIN, ROLLER DRIVE USE 78 LINKS FROM 10 FT ROLL MARKED 1740D PLUS 1 CONNECTING LINK 1310D	
29	79 072 C1 180 073	SHIELD, OUTER BOLT, 5/16 X 1/2 TYPE 5 -6-	
30	79 073 C1 180 124 120 382	SHIELD, PTO BOLT, 3/8 X 1-1/4 TYPE 5 -4- WASHER, 3/8 LOCK -4-	
31	79 075 C1 180 073 120 214 120 393	SHIELD, TUNNEL BOLT, 5/16 X 1/2 TYPE 5 -2- WASHER, 5/16 LOCK -2- WASHER, .344 X .688 X .051 -2-	
32		GEAR BOX -FOR COMPONENTS SEE LIST OF PARTS UNDER DETAILS OF GEAR BOX-	
33		PTO ASSEMBLY -SERVICEABLE PARTS ARE-	
1	254 633 C1	SHAFT, PTO SPLINED END	
1	254 634 C1	SHAFT, PTO HUB END	
	180 130	BOLT, 3/8 X 2 TYPE 5	
9	411 655	NUT, 3/8 CAD P/T LOCK TYPE 5	

WEIGHT BRACKET PARTS ACCESSORY



CA:07192A

79 297 C92 PARTS ACCESSORY, WEIGHT BRACKET
-CONSISTS OF REF NOS 1 AND 2-
HARDWARE-

1		BRACKET ASSY, WEIGHT -NOT SERVICED SEPARATELY, ORDER PARTS ACCESSORY, 79 297 C92-	
	180 124	BOLT, 3/8 X 1-1/4 TYPE 5 -4-	
	120 382	WASHER, 3/8 LOCK -4-	
	120 377	NUT, 3/8 TYPE 5 -4-	
2	1 254 812 C1	BRACE, WIEIGHT BRACE -2-	
	251 040 R1	NUT, 1/2 PLN PJTN WELD PILOT -2-	
	180 175	BOLT, 1/2 X 1-1/4 TYPE 5 -4-	
	120 384	WASHER, 1/2 LOCK -4-	
	120 387	WASHER, .375 X .750 X .054 -2-	
3	132 467 C2	HANGER ASSY, FRONT -FOR TRACTORS NOT EQUIPPED W/38C, 44C OR 50C MOWER-	

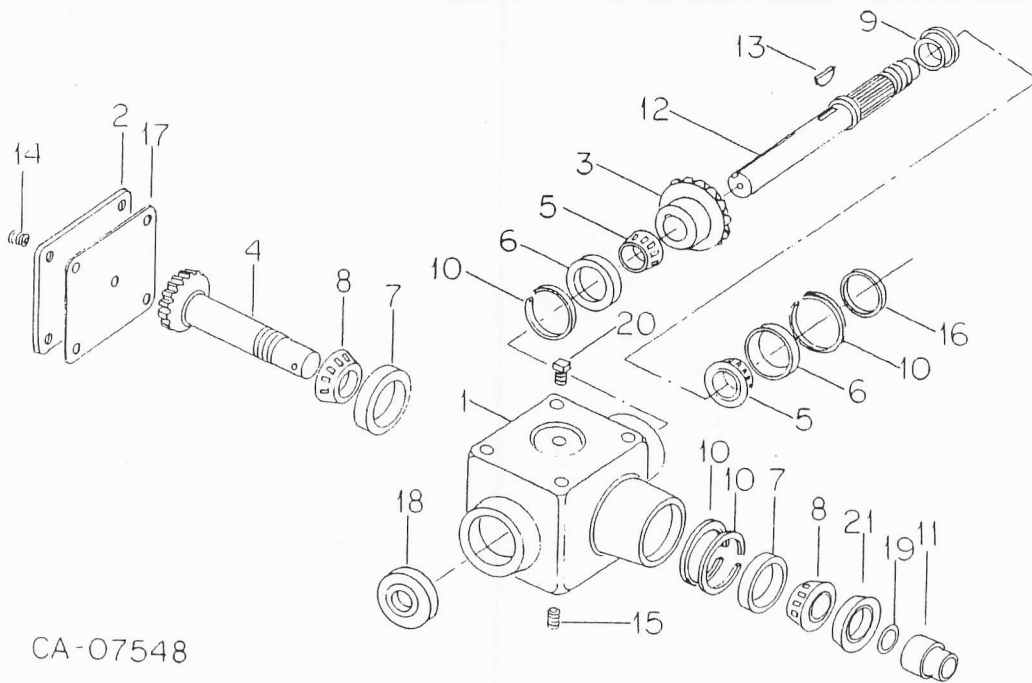


REF. NO.	PART NUMBER	DESCRIPTION	CPE - 2
----------	-------------	-------------	---------

REF. NO.	PART NUMBER	DESCRIPTION	CPE - 2
----------	-------------	-------------	---------

GEAR BOX

GEAR BOX - CONTINUED



CA-07548

1	79 999 C1	HOUSING, GEAR BOX
2	127 198 C1	COVER
3	80 000 C1	GEAR
4	80 001 C1	SHAFT, BEVEL PINION
5	463 911 C91	BEARING, CONE -2-
6	572 564 R1	BEARING, CUP -2-
7	80 003 C1	BEARING, CUP -2-
8	80 004 C91	BEARING, CONE -2-
9	80 005 C1	NUT, STAKE
10	513 010 R1	RING, SNAP -4-
	180 075	BOLT, 5/16 X 5/8 TYPE 5 -4-
11	80 006 C1	NUT, STAKE
12	80 007 C1	SHAFT, OUTPUT
13	124 551	KEY, 1/4 X 7/8 SAE WOODRUFF
14	444 571	PLUG, 1/8-27 SQ/HD AUTO PIPE
15	444 698	PLUG, 3/8-18 HEX/SKT AUTO PIPE
16	80 008 C1	CAP
17	80 009 C1	GASKET
18	128 202 C1	SEAL, OIL
19	372 764 R1	O-RING, 1-1/8 X 1-5/16 CLASS 5
20	80 010 C1	PLUG, VENT
21	420 140 C91	SEAL, OIL

