



BACKFILL BLADE -42 INCH-

-1-

SECTION A



BACKFILL BLADE -42 INCH-

-1-

SECTION A

REF. PART
NO. NUMBER DESCRIPTION CPE-2

BACKFILL BLADE -42 INCH-
TRACTORS W/O TRANSMISSION DRIVEN PTO
& EQUIPPED W/THREE POINT HITCH
BUILT 1963 TO 1975

REF. PART
NO. NUMBER DESCRIPTION CPE-2

BACKFILL BLADE -42 INCH- -CONTINUED
TRACTORS W/O TRANSMISSION DRIVEN PTO
& EQUIPPED W/THREE POINT HITCH
BUILT 1963 TO 1975

INDEX TO UNITS	DESCRIPTION	PAGE	GRID
BLADE		2	1 A08
FRAME, MAIN		2	1 A08
HITCH		2	1 A08
PRODUCT GRAPHICS		3	1 A09

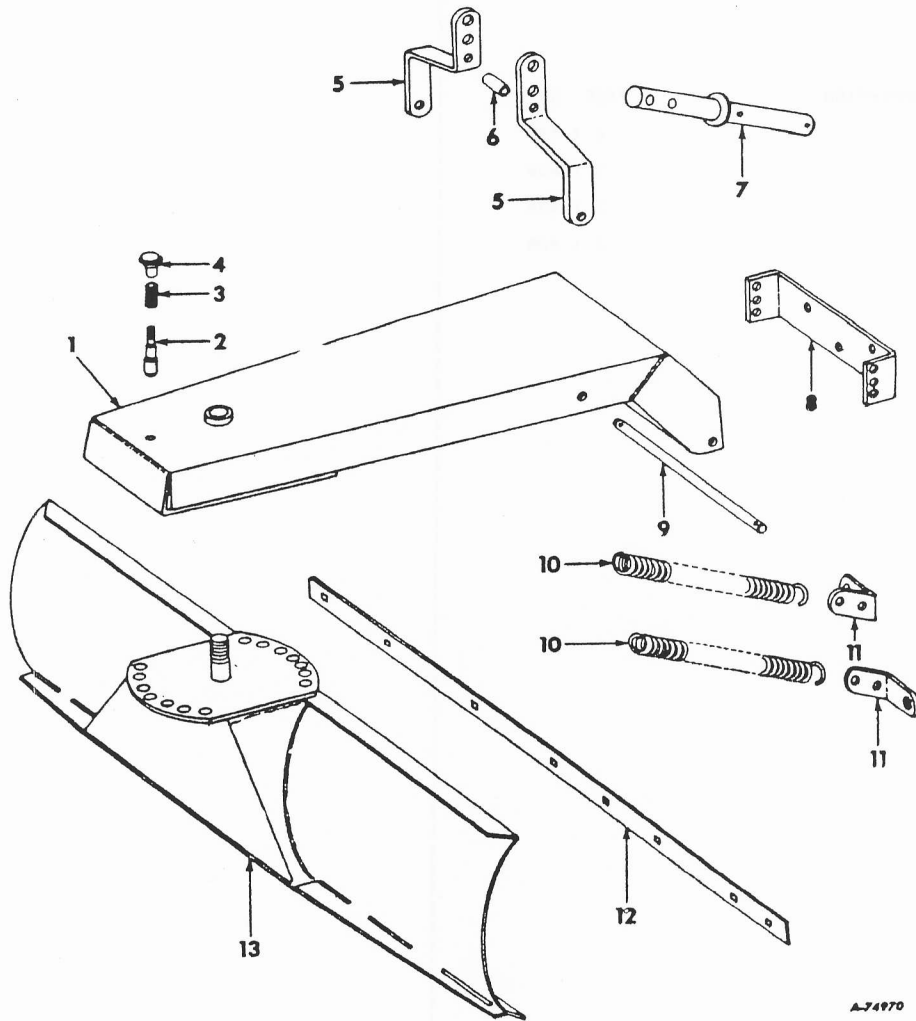


REF. NO.	PART NUMBER	DESCRIPTION	CPE-2
----------	-------------	-------------	-------

REF. NO.	PART NUMBER	DESCRIPTION	CPE-2
----------	-------------	-------------	-------

BLADE, HITCH AND MAIN FRAME

BLADE, HITCH AND MAIN FRAME -CONTINUED



A-74970

1	473 310 R91	FRAME ASSY, MAIN
2	473 319 R1	PIN, PIVOT
3	1 160 G	SPRING, PIVOT PIN
4	473 317 R1	KNOB, PIVOT PIN

5	473 320 R1	BRACKET, HITCH -2-
	120 377	NUT, 3/8-16 C-Z HEX.
	NA 141	PIN, 1/2 X 1-7/8 STD-HD
	520 175 R1	PIN, QUICK ATTACHABLE COTTER
	180 130	SCREW, 3/8-16 X 2 C-Z HEX-HD CAP
	120 382	WASHER, 3/8 C-Z MED LOCK
6	473 321 R1	SPACER, LIFT LINK



REF. NO.	PART NUMBER	DESCRIPTION	CPE-2	REF. NO.	PART NUMBER	DESCRIPTION	CPE-2
BLADE, HITCH AND MAIN FRAME -CONTINUED							
7	473 325 R11	PIN ASSY, HITCH LIFT					
	137 243	PIN, 1/8 X 1-1/2 COTTER					
	180 126	SCREW, 3/8-16 X 1-1/2 C-Z HEX-HD CAP -3-					
Q	3 480	WASHER, 1-1/32 X 1-1/2 X 11 GA					
Q	3 481	WASHER, 1-1/32 X 1-1/2 X 16 GA					
8	473 324 R1	CHANNEL, HITCH MOUNT					
D	3 373	PIN, 1/2 X 1-1/2 STD-HD -2-					
	520 175 R1	PIN, QUICK ATTACHABLE COTTER -2-					
9	473 322 R1	ROD, LIFT					
	137 218	PIN, 5/32 X 1-1/4 C-Z COT -2-					
	120 396	WASHER, 17/32 X 1-1/16 X .095 C-Z -2-					
10	23 331 SA	SPRING, LIFTING -2-					
11	473 323 R1	ANGLE, SPRING ATTACHING -2-					
	180 124	SCREW, 3/8-16 X 1-1/4 C-Z HEX-HD CAP -2-					
	180 134	SCREW, 3/8-16 X 2-1/2 C-Z HEX-HD CAP					
12	464 371 R2	EDGE, BLADE CUTTING					
	19 576 R1	BOLT, 5/16-18 X 7/8 C-Z SQ-NK CRG -7-					
	120 376	NUT, 5/16-18 C-Z HEX, -7-					
	120 214	WASHER, 5/16 C-Z MED LOCK -7-					
13	473 326 R11	MOLDBOARD ASSY, CUB CADET BLADE					
	427 643	NUT, 7/8-9 C-Z HEX					
	137 214	PIN, 1/8 X 1-3/4 C-Z COTTER					
	20 703 R1	WASHER, 29/32 X 1-3/4 X 16 GA C-Z					
PRODUCT GRAPHICS							
2	752 019 R1	PRODUCT GRAPHIC, IH -IN CENTER ON TOP OF MAIN FRAME-					



BACKFILL BLADE -42 INCH-

-4-

SECTION A



BACKFILL BLADE -42 INCH-

-4-

SECTION A

REF. NO.	PART NUMBER	DESCRIPTION	CPE-2
[Empty table body]			

REF. NO.	PART NUMBER	DESCRIPTION	CPE-2
[Empty table body]			



REF. NO.	PART NUMBER	DESCRIPTION	CPE-2
----------	-------------	-------------	-------

REF. NO.	PART NUMBER	DESCRIPTION	CPE-2
----------	-------------	-------------	-------

BLADE -42 INCH-
 BUILT 1960 AND 1961
 CUB CADET TRACTORS
 BUILT 1960 AND 1961
 CUB CADET TRACTORS

BLADE -42 INCH- -CONTINUED
 BUILT 1960 AND 1961
 CUB CADET TRACTORS
 BUILT 1960 AND 1961
 CUB CADET TRACTORS

INDEX TO UNITS	DESCRIPTION	PAGE	GRID
BLADE & FRAME		6 1	A12
PRODUCT GRAPHICS		7 1	A13

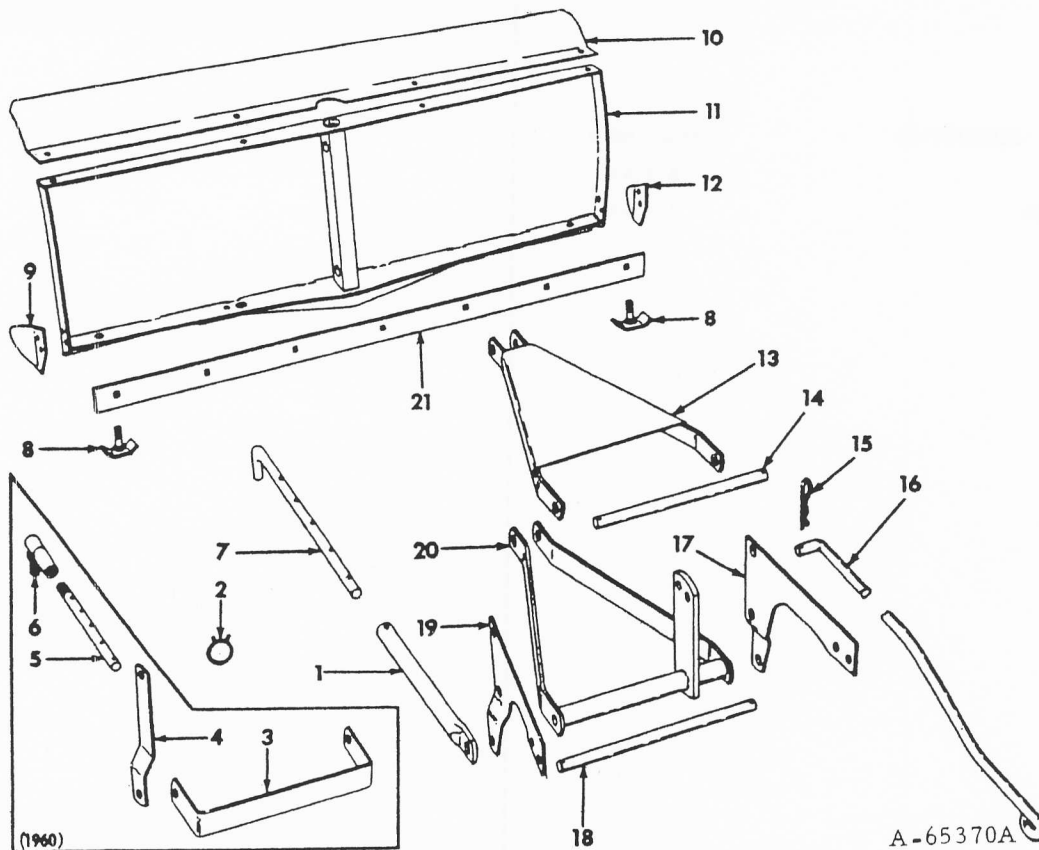


REF. NO.	PART NUMBER	DESCRIPTION	CPE-2
----------	-------------	-------------	-------

REF. NO.	PART NUMBER	DESCRIPTION	CPE-2
----------	-------------	-------------	-------

BLADE, FRAME AND RELATED PARTS

BLADE, FRAME AND RELATED PARTS -CONTINUED



1	464 385 R1 127 253	TUBE, ADJUSTING PIN, 3/16 X 1-5/8 C-Z COTTER	
2	460 494 R1	CLAMP, HOSE -FOR COT. PIN STORAGE-	
3	464 389 R1 17 433 R1 120 384 120 378	BRACE, TRACTOR FRAME - ORDER REF. NOS. 17 & 19- BOLT, 1/2 X 1 C-Z HEX-HD MACH -2- WASHER, 1/2 C-Z MED LOCK -2- NUT, 1/2-13 C-Z HEX. -2-	
4	464 380 R1	BAR, MOUNTING -2- -ORDER REF NO. 19-	
5	464 386 R1	ROD, ADJUSTING -1960-	
6	464 384 R91 121 358 121 574	JOINT, BALL -1960- NUT, 5/8-18 C-Z HEX. NUT WASHER, 5/8 MED LOCK	
7	465 380 R1 187 988 12 258 R1	ROD, ADJUSTING -1961- PIN, 3/16 X 1-1/4 C-Z COTTER WASHER, 21/32 X 1-1/4 X 11 GA	

8	464 372 R1 18 627 R1 120 380 120 375	SHOE, SKID -2 -1960- -ORDER SHOE 465 376 R11 AND TWO NUTS 120 238- BOLT, 1/4-20 X 1 C-Z SQ-NK CRG -2- WASHER, 1/4 C-Z MED LOCK -2- NUT, 1/4-20 C-Z HEX. -2-	
8	465 376 R11 120 238	SHOE ASSY, SKID -2 -1961- NUT, 1/2-13 C-Z HEX. JAM -4-	
9	465 377 R1 180 122 120 382 120 377	TRIP, BLADE LH BOLT, 3/8 X 1 C-Z HEX-HD MACH -2- WASHER, 3/8 C-Z MED LOCK -2- NUT, 3/8-16 C-Z HEX. -2-	
10	465 383 R91 180 077 120 214 120 376	DEFLECTOR W/RH TRIP, SNOW -1961- BOLT, 5/16 X 3/4 C-Z HEX-HD MACH -4- WASHER, 5/16 C-Z MED LOCK -4- NUT, 5/16-18 C-Z HEX. -4-	
11	464 365 R92	BLADE ASSY	



REF. NO.	PART NUMBER	DESCRIPTION	CPE-2
BLADE, FRAME AND RELATED PARTS -CONTINUED			
12	465 378 R1	TRIP, BALDE RH -1961-	
	180 122	BOLT, 3/8 X 1 C-Z HEX-HD MACH -2-	
	120 382	WASHER, 3/8 C-Z MED LOCK -2-	
	120 377	NUT, 3/8-16 C-Z HEX. -2-	
13	464 374 R91	LINK ASSY, UPPER	
	6 642	PIN, 5/8 X 2-1/4 DLD-STD-HD	
	187 988	PIN, 3/16 X 1-1/4 C-Z COTTER	
14	464 381 R1	PIN, REAR PIVOT	
	187 988	PIN, 3/16 X 1-1/4 C-Z COTTER	
15	610 784 R1	PIN, QUICK ATTACHABLE COTTER	
16	464 387 R1	ROD, LIFT	
	137 180	PIN, 1/8 X 7/8 C-Z COTTER	
17	465 209 R1	PLATE, MOUNTING RH -1961-	
	17 433 R1	BOLT, 1/2 X 1 C-Z HEX-HD MACH -3-	
	120 384	WASHER, 1/2 C-Z MED LOCK -3-	
	120 378	NUT, 1/2-13 C-Z HEX. -3-	
18	464 382 R1	PIN, REAR LOWER	
	187 988	PIN, 3/16 X 1-1/4 C-Z COTTER	
19	465 208 R1	PLATE, MOUNTING LH -1961-	
	17 433 R1	BOLT, 1/2 X 1 C-Z HEX-HD MACH -3-	
	120 384	WASHER, 1/2 C-Z MED LOCK -3-	
	120 387	NUT, 1/2-13 C-Z HEX. -3-	
20	464 375 R91	LINK ASSY, LOWER	
	453 116 R1	PIN, 5/8 X 2-3/8 DLD-STD-HD	
	187 988	PIN, 3/16 X 1-1/4 C-Z COTTER	
21	464 371 R2	EDGE, CUTTING	
	16 897 R1	BOLT, 5/16 X 3/4 C-Z SQ-NK CRG -7-	
	120 214	WASHER, 5/16 C-Z MED LOCK -7-	
	120 376	NUT, 5/16-18 C-Z HEX. -7-	

PRODUCT GRAPHICS

2	750 501 R1	PRODUCT GRAPHIC, 1H -ON UPPER LINK-	
---	------------	--	--



BLADE -42 INCH-

-8-

SECTION A



BLADE -42 INCH-

-8-

SECTION A

REF. NO.	PART NUMBER	DESCRIPTION	CPE-2
----------	-------------	-------------	-------

REF. NO.	PART NUMBER	DESCRIPTION	CPE-2
----------	-------------	-------------	-------



REF. NO.	PART NUMBER	DESCRIPTION	CPE-2
----------	-------------	-------------	-------

REF. NO.	PART NUMBER	DESCRIPTION	CPE-2
----------	-------------	-------------	-------

BLADE W/SPRING TRIP -42 INCH-
 BUILT 1961 TO 1975
 BLADE W/SPRING TRIP -54 INCH-
 BUILT 1974 AND SINCE

BLADE W/SPRING TRIP -42 INCH- -CONTINUED
 BUILT 1961 TO 1975
 BLADE W/SPRING TRIP -54 INCH-
 BUILT 1974 AND SINCE

INDEX TO UNITS	DESCRIPTION	PAGE	GRID
BLADE			
SERIAL NO. 400,000 & BELOW		10	1 A16
SERIAL NO. 400,001 & ABOVE		12	1 A18
FRAME, MAIN			
SERIAL NO. 400,000 & BELOW		10	1 A16
SERIAL NO. 400,001 & ABOVE		12	1 A18
HYDRAULIC ATT		15	1 A21
		16	1 A22
PRODUCT GRAPHICS		11	1 A17
SPRINGS			
SERIAL NO. 400,000 & BELOW		10	1 A16
SERIAL NO. 400,001 & ABOVE		12	1 A18



-10-
BLADE W/SPRING TRIP -42 & 54 INCH-

SECTION A



-10-
BLADE W/SPRING TRIP -42 & 54 INCH-

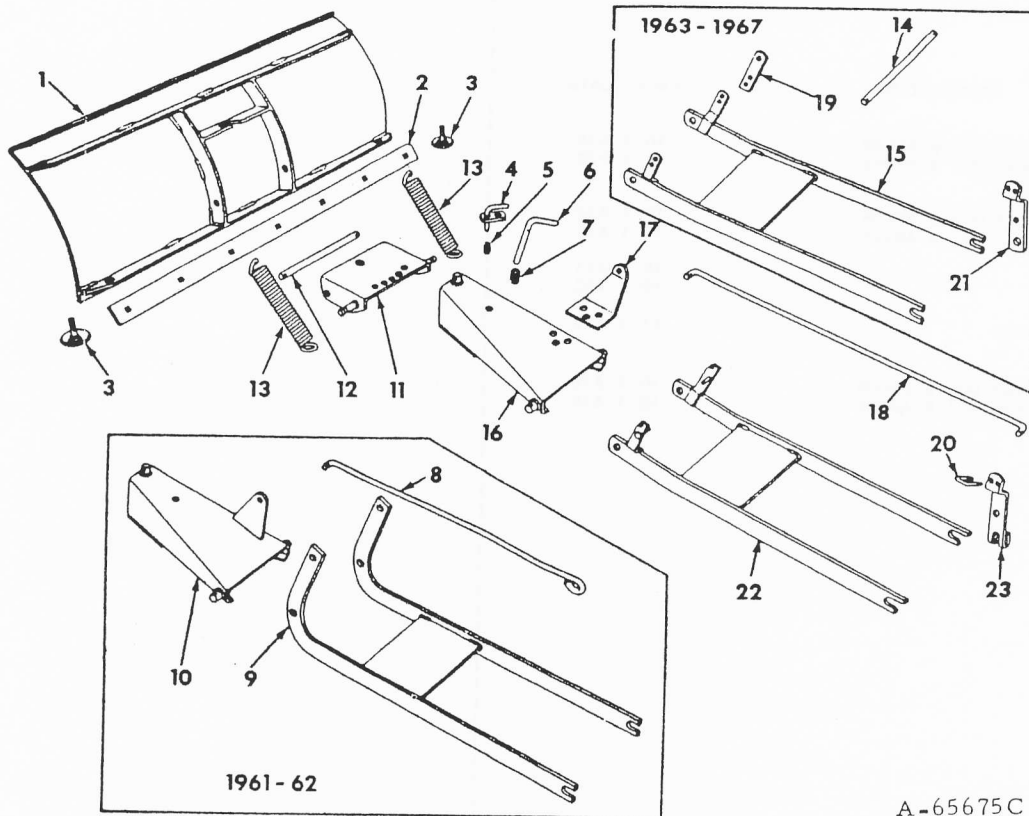
SECTION A

REF. NO.	PART NUMBER	DESCRIPTION	CPE-2
----------	-------------	-------------	-------

REF. NO.	PART NUMBER	DESCRIPTION	CPE-2
----------	-------------	-------------	-------

BLADE, MAIN FRAME AND SPRINGS
-TRACTOR SERIAL NO. 400,000 & BELOW-

BLADE, MAIN FRAME AND SPRINGS -CONTINUED
-TRACTOR SERIAL NO. 400,000 & BELOW-



A-65675C

1	466 899 R91	BLADE ASSEMBLY -42 INCH-
1	61 630 C1	BLADE ASSEMBLY -54 INCH-
2	464 371 R2	EDGE, BLADE CUTTING -42 INCH-
2	61 634 C1	EDGE, BLADE CUTTING -54 INCH-
	19 576 R1	BOLT, 5/16 X 7/8 C-Z SQ-NK CRG -4-
	120 376	NUT, 5/16 C-Z HEX. -7-
	120 214	WASHER, 5/16 C-Z MED LOCK -7-
3	466 906 R11	SHOE ASSEMBLY, SKID -2-
	120 238	NUT, 1/2 C-Z HEX. -2-
	120 239	WASHER, 1/2 C-Z LIGHT LOCK -2-
4	466 891 R11	LOCK ASSEMBLY, SPRING TRIP
	141 406	PIN, 7/64 X 7/8 C-Z COTTER
	120 394	WASHER, 13/32 X 13/16 X .065 C-Z
5	351	SPRING, COMPRESSION TYPE
6	466 890 R1	PIN, ANGLING
	120 169	PIN, 5/32 X 1 C-Z COTTER -2-
	120 396	WASHER, 17/32 X 1-1/16 X .121 C-Z -2-
7	352 370 R1	SPRING, COMPRESSION TYPE
8	464 387 R1	ROD, LIFT
	473 443 R1	PIN, QUICK ATTACHABLE COTTER -2-
	137 180	PIN, 1/8 X 7/8 C-Z COTTER
9	466 893 R11	SUB-FRAME ASSY -ORDER PKG. 473 932 R91-

10	466 883 R91	FRAME ASSEMBLY, MAIN -ORDER REF. NOS. 16 & 17-
	427 640	NUT, 3/4 C-Z SLT HEX.
	137 209	PIN, 1/8 X 1-5/8 C-Z COTTER
	137 218	PIN, 5/32 X 1-1/4 C-Z COTTER -2-
	131 017	WASHER, 13/32 X 1-1/2 X .134 C-Z
11	466 896 R31	FRAME ASSEMBLY, PIVOT
12	466 898 R1	ROD, BLADE PIVOT
	137 218	PIN, 5/32 X 1-1/4 C-Z COTTER -2-
13	PO 27	SPRING, EXTENSION TYPE -2-
14	473 926 R1	ROD, MOUNTING -1961 TO 1967-
	520 175 R1	PIN, QUICK ATTACHABLE COTTER -2-
	446 257	WASHER, 13/32 X 1-3/4 X .148 C-Z -2-
15	473 919 R91	SUB-FRAME ASSY, 1963 TO 1967- -ORDER SUB-FRAME 489 618 R1-
16	473 918 R92	FRAME ASSEMBLY, MAIN -1963 UP-
	427 640	NUT, 3/4 C-Z SLT HEX.
	137 209	PIN, 1/8 X 1-5/8 C-Z COTTER
	137 218	PIN, 5/32 X 1-1/4 C-Z COTTER -2-
	131 017	WASHER, 13/32 X 1-1/2 X .134 C-Z



REF. NO.	PART NUMBER	DESCRIPTION	CPE-2	REF. NO.	PART NUMBER	DESCRIPTION	CPE-2
BLADE, MAIN FRAME AND SPRINGS -CONTINUED							
-TRACTOR SERIAL NO. 400,000 & BELOW-							
17	473 925 R1	ARM, LIFT					
	120 378	NUT, 1/2-13 C-Z HEX. -3-					
	180 175	SCREW, 1/2-13 X 1-1/4 C-Z HEX-HD CAP -3-					
	120 384	WASHER, 1/2 C-Z MED LOCK -3-					
18	473 924 R1	ROD, LIFT -1963 UP-					
	473 443 R1	PIN, QUICK ATTACHABLE COTTER -2-					
19	473 922 R1	BRACE, EXTENSION -2- -1961 TO 1967-					
	120 378	NUT, 1/2-13 C-Z HEX. -4-					
	180 176	SCREW, 1/2-13 X 1-3/8 C-Z HEX-HD CAP -4-					
	120 384	WASHER, 1/2 C-Z MED LOCK -4-					
20	661 503 R1	U-BOLT, USED W/BRACKET, 473 923 R1-					
20	485 419 R1	U-BOLT, -USED W/BRACKET 485 469 R1 OR 489 622 R1-					
	485 420 R1	SPACER -2 USED W/BRACKET 485 469 R1 OR 489 622 R1-					
	120 375	NUT, 1/4-20 C-Z HEX. -2-					
	120 380	WASHER, 1/4 C-Z MED LOCK -2-					
21	473 923 R1	BRACKET, LIFT -ORDER BRACKET, 485 469 R1, U-BOLT, 485 419 R1 & 2 SPACER, 485 420 R1-					
21	485 469 R1	BRACKET, LIFT -1961 TO 1967-					
22	489 618 R1	SUB-FRAME ASSY -1968 UP-					
	180 175	BOLT, 1/2 X 1-1/4 TYPE 5 -2-					
	120 384	WASHER, 1/2 C-Z MED LOCK -2-					
	120 378	NUT, 1/2 TYPE 5 -2-					
23	489 622 R1	BRACKET, LIFT -1968 UP-					
	180 112	SCREW, 5/16-18 X 2-3/4 C-Z HEX-HD CAP					
	120 393	WASHER, 11/32 X 11/16 X .065 C-Z -2-					
	120 376	NUT, 5/16-18 C-Z HEX.					
PRODUCT GRAPHICS							
2	752 018 R1	PRODUCT GRAPHICS, IH -ON MAIN FRAME-					

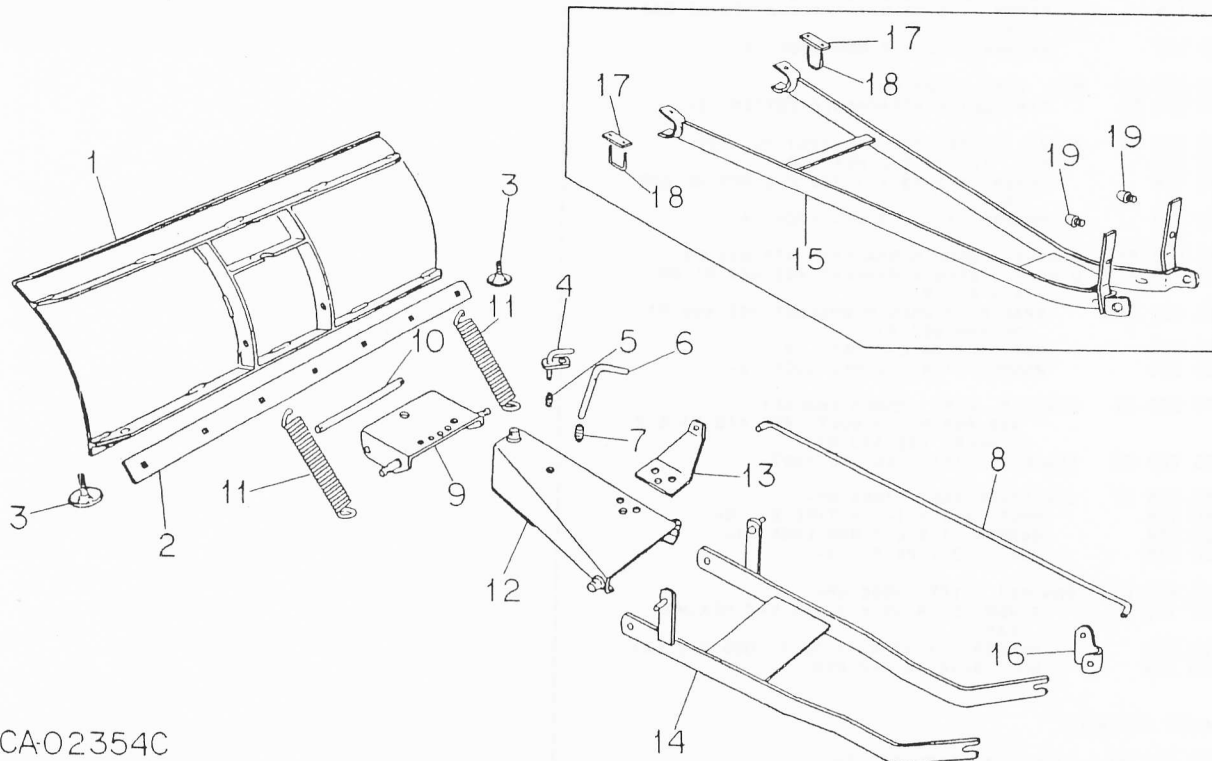


REF. NO.	PART NUMBER	DESCRIPTION	CPE-2
----------	-------------	-------------	-------

REF. NO.	PART NUMBER	DESCRIPTION	CPE-2
----------	-------------	-------------	-------

BLADE, MAIN FRAME AND SPRINGS
-TRACTOR SERIAL NO. 400,001 & ABOVE-

BLADE, MAIN FRAME AND SPRINGS -CONTINUED
-TRACTOR SERIAL NO. 400,001 & ABOVE-



CA-02354C

1	466 899 R91	BLADE ASSY -42 INCH-
1	61 630 C1	BLADE ASSY -54 INCH-
2	464 371 R2	EDGE, BLADE CUTTING -42 INCH-
2	61 634 C1	EDGE, BLADE CUTTING -54 INCH-
	19 576 R1	BOLT, 5/16 X 7/8 C-Z SQ-NK CRG -4-
	120 376	NUT, 5/16 C-Z HEX. -7-
	120 238	NUT, 1/2 C-Z HEX. -2-
	120 214	WASHER, 5/16 C-Z MED LOCK -7-
3	466 906 R11	SHOE ASSEMBLY, SKID -2-
	120 238	NUT, 1/2 C-Z HEX. -2-
	120 239	WASHER, 1/2 C-Z LIGHT LOCK -2-
4	466 891 R11	LOCK ASSEMBLY, SPRING TRIP
	141 406	PIN, 7/64 X 7/8 C-Z COTTER
	120 394	WASHER, 13/32 X 13/16 X .065 C-Z
5	351	SPRING, COMPRESSION TYPE
6	466 890 R1	PIN, ANGLING
	120 169	PIN, 5/32 X 1 C-Z COTTER -2-
	120 396	WASHER, 17/32 X 1-1/16 X .121 C-Z -2-
7	352 370 R1	SPRING, COMPRESSION TYPE
8	548 589 R1	ROD, LIFT -SERIAL NO. 665000 & BELOW-
8	140 090 C1	ROD, LIFT -SERIAL NO. 665001 & ABOVE-
8	473 924 R1	ROD, LIFT -76 AND 80 LAWN TRACTORS-
	473 443 R1	PIN, QUICK ATTACHABLE COTTER -2-
	20 869 R1	WASHER, .531 X .875 X .054
	131 016	WASHER, .656 X 1.312 X .074
9	466 896 R31	FRAME ASSY, PIVOT
10	466 898 R1	ROD, BLADE PIVOT
	137 218	PIN, 5/32 X 1-1/4 C-Z COTTER -2-
11	PO 27	SPRING, EXTENSION TYPE -2-

12	473 918 R92	FRAME ASSY, MAIN
	427 640	NUT, 3/4 C-Z SLT HEX.
	137 209	PIN, 1/8 X 1-5/8 C-Z COTTER
	137 218	PIN, 5/32 X 1-1/4 C-Z COTTER -2-
	131 017	WASHER, 13/32 X 1-1/2 X .134 C-Z
13	548 590 R1	ARM, LIFT -SERIAL NO. 665000 & BELOW-
13	140 092 C1	ARM, LIFT -SERIAL NO. 665001 & ABOVE-
13	57 217 C1	ARM, LIFT -76 & 80 LAWN TRACTORS-
	120 378	NUT, 1/2-13 C-Z HEX. -3-
	180 175	SCREW, 1/2-13 X 1-1/4 C-Z HEX-HD CAP -3-
	120 384	WASHER, 1/2 C-Z MED LOCK -3-
	144 583 C1	BAR, LOCKOUT -SERIAL NO. 665001 AND ABOVE-
	180 122	BOLT, 3/8 X 1 TYPE 5 -2-
	120 377	NUT, 3/8 TYPE 5 -2-
14	549 068 R2	SUB-FRAME ASSY, BLADE
15	57 209 C1	FRAME ASSY, SUB -76 AND 80 LAWN TRACTORS-
	479 696 R91	PIN, KLIK -2-
	21 753 R1	WASHER, .781 X 1.500 X .054 ZND -2-
16	78 057 C1	BRACKET, LIFT ROD -SERIAL NO. 665001 AND ABOVE-
16	57 218 C1	BRACKET, LIFT ROD -76 AND 80 LAWN TRACTORS-
	598 811 R1	BOLT, 3/8 X 1-3/4 CRG TYPE 5
	274 993	NUT, 3/8 CAD P/T LOCK TYPE 1
17	57 219 C1	STRAP, REAR AXLE -2- -76 AND 80 LAWN TRACTORS-
18	538 731 R1	U-BOLT, REAR AXLE -76 AND 80 LAWN TRACTORS-
	120 376	NUT, 5/16 TYPE 5 -4-
	57 220 C1	BUMPER, RUBBER -2-
	27 927 DA	WASHER, .531 X .875 X .150 -2-
	120 368	NUT, 5/16-NF TYPE 5 -2-



-13-
BLADE W/SPRING TRIP -42 & 54 INCH-

SECTION A



-13-
BLADE W/SPRING TRIP -42 & 54 INCH-

SECTION A

REF. NO.	PART NUMBER	DESCRIPTION	CPE-2	REF. NO.	PART NUMBER	DESCRIPTION	CPE-2
[Empty table body with dashed vertical lines]							



-14-
BLADE W/SPRING TRIP -42 & 54 INCH-

SECTION A



-14-
BLADE W/SPRING TRIP -42 & 54 INCH-

SECTION A

REF. PART
NO. NUMBER DESCRIPTION CPE-2

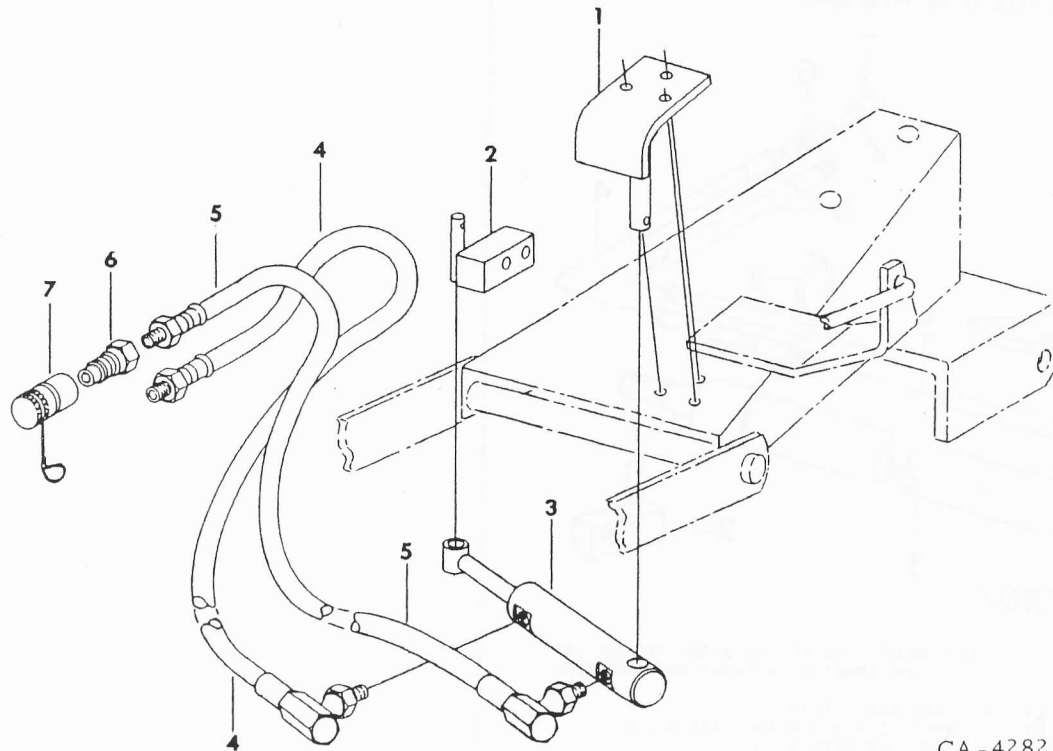
REF. PART
NO. NUMBER DESCRIPTION CPE-2



REF. NO.	PART NUMBER	DESCRIPTION	CPE-2	REF. NO.	PART NUMBER	DESCRIPTION	CPE-2
----------	-------------	-------------	-------	----------	-------------	-------------	-------

HYDRAULIC ATTACHMENT

HYDRAULIC ATTACHMENT -CONTINUED



CA-4282

	61 904 C91	HYDRAULIC ANGLED BLADE ATTACHMENT -FOR TRACTORS W/FRONT HYDRAULIC OUTLETS- -REPLACED BY 79 063 C91-
	144 585 C91	HYDRAULIC ANGLED BLADE ATTACHMENT -FOR CUB CADET 782 TRACTORS W/FRONT HYDRAULIC OUTLETS- -REPLACED BY 79 063 C91-
1	61 900 C1 24 840 R1	BRACKET ASSY. REAR SCREW, 3/8-16 X 1 PHC HEX-HD CAP TYPE 8 -3-
	120 394 120 377	WASHER, .406 X .812 X .065 ZND -3- NUT, 3/8-16 ZND HEX. -3-
2	106 812 C1 24 843 R1	BRACKET ASSY. FRONT SCREW, 3/8-16 X 2 PHC HEX-HD CAP TYPE 8 -2-
	120 394 120 377	WASHER, .406 X .812 X .065 ZND -2- NUT, 3/8-16 ZND HEX. -2-
3		CYLINDER ASSY. 1-1/2 X 7-1/2 HYDRAULIC -REPLACEMENT CYLINDER NOT FURNISHED; MUST OBTAIN FIELD ATTACHMENT 79 063 C91-
	103 406 131 017 103 419	PIN, 3/16 X 3/4 COTTER WASHER, .812 X 1.469 X .134 ZND PIN, 1/4 X 1-1/4 COTTER
4	106 256 C1	HOSE, 15 INCH -FOR USE W/61 904 C91 ATTACHMENT-
4	144 584 C1	HOSE, 30 INCH -FOR USE W/144 585 C91 ATTACHMENT-
5	106 806 C1	HOSE, 22 INCH

61	166 123 C91	NOSE PIECE ASSY -2-
7	106 814 C1	CAP, HYDRAULIC COUPLING -2-

PRODUCT GRAPHICS

NOTE - THE FOLLOWING PRODUCT GRAPHIC
PACKAGES MAY BE REQUIRED FOR YOUR
MACHINE.

77 583 C91	PACKAGE, IH TRADEMARK -LARGE SIZE- -CONSISTS OF SIH TRADEMARK 6.58 X 7.09 -2- SIH TRADEMARK 7.68 X 8.27 -2- SIH TRADEMARK 10.24 X 11.02 -2-
77 582 C91	PACKAGE, IH TRADEMARK -MEDIUM SIZE- -CONSISTS OF SIH TRADEMARK 3.66 X 3.94 -2- SIH TRADEMARK 4.39 X 4.72 -2- SIH TRADEMARK 5.48 X 5.91 -2-
77 581 C91	PACKAGE, IH TRADEMARK -SMALL SIZE- -CONSISTS OF SIH TRADEMARK 1.46 X 1.57 -2- SIH TRADEMARK 2.19 X 2.36 -2- SIH TRADEMARK 2.93 X 3.15 -2-

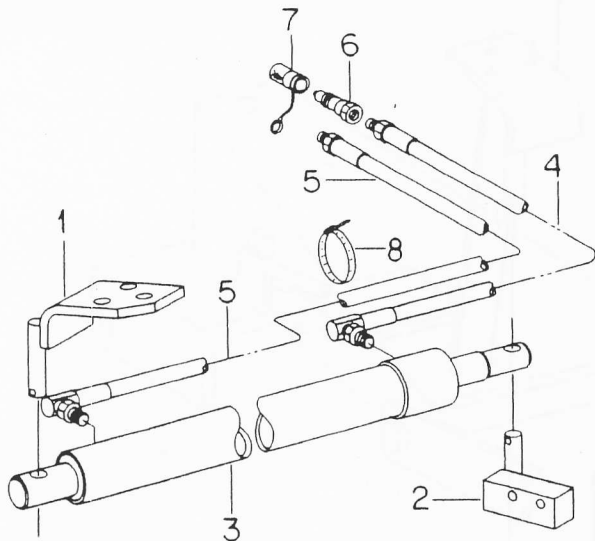


REF. NO.	PART NUMBER	DESCRIPTION	CPE-2
----------	-------------	-------------	-------



REF. NO.	PART NUMBER	DESCRIPTION	CPE-2
----------	-------------	-------------	-------

HYDRAULIC ANGLED BLADE ATTACHMENT



CA-07207

ATTACHMENT, HYD ANGLED BLADE 79 063 C91
-FOR TRACTORS W/FRONT HYD OUTLETS-

1	223 346 C1	BRACKET ASSY, REAR
	25 496 R1	BOLT, 3/8 X 7/8 PHC TYPE 8 -3-
	120 377	NUT, 3/8 TYPE 5 -3-
	18 481 R1	PIN, 3/16 X 1 COT
	131 016	WASHER, .656 X 1.312 X .074
2	223 349 C1	BRACKET ASSY, FRONT
	24 843 R1	BOLT, 3/8 X 2 PHC TYPE 8 -2-
	120 394	WASHER, .406 X .812 X .051 -2-
	120 377	NUT, 3/8 TYPE 5 -2-
	18 481 R1	PIN, 3/16 X 1 COT
	131 016	WASHER, .656 X 1.312 X .074
3	224 595 C91	CYLINDER ASSY, HYDRAULIC
		-SERVICE PARTS ARE
	1 260 932 C1	END ASSY, CYLINDER REAR
	1 260 929 C1	ROD ASSY, CYLINDER AND PISTON
	1 260 930 C1	SLEEVE ASSY, CYLINDER
	1 260 931 C1	KIT, HYD CYLINDER SEAL-
4	223 351 C1	HOSE -22 IN.
5	223 352 C1	HOSE -30 IN.
6	166 123 C91	COUPLING, HYD HOSE -2-
7	106 814 C1	CAP, HYD COUPLING
8	306 132 C1	STRAP, CABLE LOCK



-17-
BLADE W/SPRING TRIP -42 & 54 INCH-

SECTION A



-17-
BLADE W/SPRING TRIP -42 & 54 INCH-

SECTION A

REF. NO.	PART NUMBER	DESCRIPTION	CPE-2
----------	-------------	-------------	-------

REF. NO.	PART NUMBER	DESCRIPTION	CPE-2
----------	-------------	-------------	-------



40 BOX SCRAPER

REF. NO.	PART NUMBER	DESCRIPTION	CPE-2
----------	-------------	-------------	-------

		40 BOX SCRAPER BUILT 1971 TO 1975	
--	--	--------------------------------------	--

INDEX TO UNITS	DESCRIPTION	PAGE	GRID
BLADE		19	1 B02
PRODUCT GRAPHICS		19	1 B02
SCRAPER BOX		19	1 B02



40 BOX SCRAPER

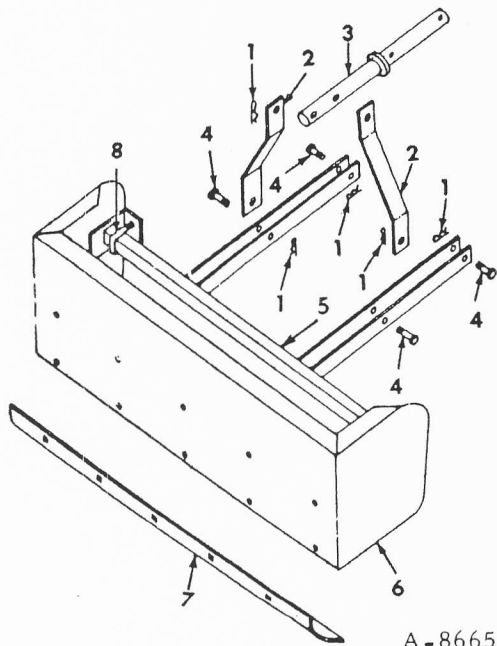
REF. NO.	PART NUMBER	DESCRIPTION	CPE-2
----------	-------------	-------------	-------

		40 BOX SCRAPER -CONTINUED BUILT 1971 TO 1975	
--	--	---	--



REF. NO.	PART NUMBER	DESCRIPTION	CPE-2
----------	-------------	-------------	-------

SCRAPER BOX AND RELATED PARTS



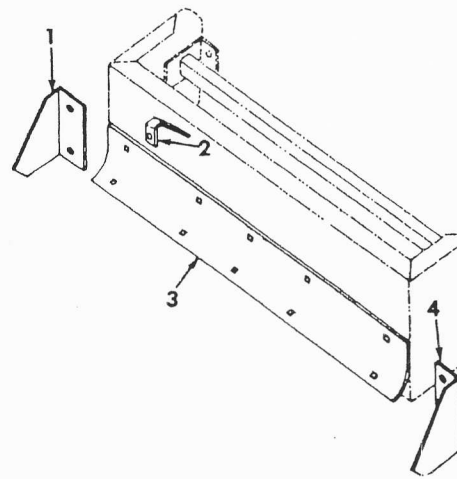
A-86654A

1	964 473 R1	PIN, QUICK ATTACHABLE COTTER -5-
2	964 398 R1	BAR, LIFT LINK -2-
3	473 325 R11	PIN ASSY, HITCH LIFT
	NA 141	PIN, 1/2 X 1-7/8 STD-HD
	103 402	PIN, 5/32 X 2-1/2 COTTER
4	1 332	PIN, 1/2 X 1-1/8 STD-HD -4-
5	964 382 R91	LIFT LINK ASSY
6	964 326 R11	BUCKET ASSY
7	964 470 R1	BLADE
	18 404 R1	BOLT, 1/4-20 X 5/8 C-Z SQ-NK CRG -10-
	18 655 R1	SCREW, 1/4-20 X 1 C-Z HEX-HD CAP -5-
	120 380	WASHER, 1/4 C-Z MED LOCK -15-
	120 375	NUT, 1/4-20 C-Z HEX. -15-
8	964 399 R1	U-BOLT, -2-
	103 320	WASHER, 5/16 MED LOCK -4-
	102 634	NUT, 5/16-18 HEX. -4-



REF. NO.	PART NUMBER	DESCRIPTION	CPE-2
----------	-------------	-------------	-------

BACKFILL BLADE



A-86655

1	964 418 R1	SIDE, REAR BLADE LH
2	964 417 R1	SUPPORT, REAR BLADE -5-
	12 653 R1	BOLT, 1/4 X 3/4 ZND SQ-NK CRG -3-
	18 627 R1	BOLT, 1/4 X 1 ZND SQ-NK CRG -2-
	120 386	WASHER, 5/16 X 3/4 X 16 GA C-Z -10-
	120 380	WASHER, 1/4 C-Z MED LOCK -10-
	120 375	NUT, 1/4-20 X-Z HEX. -10-
3	964 470 R1	BLADE
4	964 419 R1	SIDE, RH

PRODUCT GRAPHICS

547 494 R92	PACKAGE, IH PRODUCT GRAPHICS -2-
547 496 R92	PACKAGE, INTERNATIONAL PRODUCT GRAPHICS
547 498 R92	PACKAGE, MODEL DESIGNATION PRODUCT GRAPHICS



40 BOX SCRAPER



40 BOX SCRAPER

REF. NO.	PART NUMBER	DESCRIPTION	CPE-2
----------	-------------	-------------	-------

REF. NO.	PART NUMBER	DESCRIPTION	CPE-2
----------	-------------	-------------	-------

